

# Cytokine IK Antibody

Purified Rabbit Polyclonal Antibody (Pab)

Catalog # AP51280

## Product Information

---

Application	WB
Primary Accession	<a href="#">Q13123</a>
Reactivity	Human, Rat
Host	Rabbit
Clonality	Polyclonal
Calculated MW	65602

## Additional Information

---

Gene ID	3550
Other Names	Protein Red, Cytokine IK, IK factor, Protein RER, IK, RED, RER
Target/Specificity	KLH conjugated synthetic peptide derived from human Cytokine IK
Dilution	WB~~ 1:1000
Format	0.01M PBS, pH 7.2, 0.09% (W/V) Sodium azide, Glycerol 50%
Storage	Store at -20 °C.Stable for 12 months from date of receipt

## Protein Information

---

Name	IK
Synonyms	RED {ECO:0000303   PubMed:10216252}, RER
Function	Involved in pre-mRNA splicing as a component of the spliceosome (PubMed: <a href="#">28781166</a> ). Auxiliary spliceosomal protein that regulates selection of alternative splice sites in a small set of target pre-mRNA species (Probable). Required for normal mitotic cell cycle progression (PubMed: <a href="#">22351768</a> , PubMed: <a href="#">24252166</a> ). Recruits MAD1L1 and MAD2L1 to kinetochores, and is required to trigger the spindle assembly checkpoint (PubMed: <a href="#">22351768</a> ). Required for normal accumulation of SMU1 (PubMed: <a href="#">24945353</a> ).
Cellular Location	Nucleus. Nucleus, nucleoplasm. Chromosome. Cytoplasm, cytoskeleton, spindle pole. Note=Predominantly present throughout the nucleoplasm during prometaphase, metaphase and anaphase. Is also detected in nuclear foci that are not identical with Cajal bodies Starts to accumulate at chromosomes during telophase, and is nearly exclusively associated with chromosomes in newly divided cells (PubMed:24252166). Colocalizes with MAD1L1 at mitotic spindle poles during metaphase and anaphase

**Tissue Location** Ubiquitous..

## Background

---

May bind to chromatin.

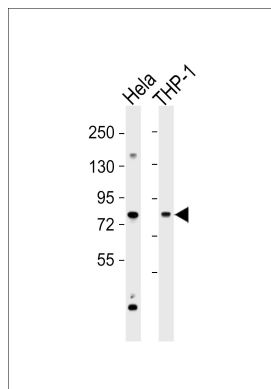
## References

---

Assier E.,et al.Gene 230:145-154(1999).  
Schmutz J.,et al.Nature 431:268-274(2004).  
Krief P.,et al.Oncogene 9:3449-3456(1994).  
Matsuoka S.,et al.Science 316:1160-1166(2007).  
Dephoure N.,et al.Proc. Natl. Acad. Sci. U.S.A. 105:10762-10767(2008).

## Images

---



All lanes : Anti-Cytokine IK Antibody at 1:1000 dilution  
Lane 1: HeLa whole cell lysates Lane 2: THP-1 whole cell  
lysates Lysates/proteins at 20 µg per lane. Secondary  
Goat Anti-Rabbit IgG, (H+L), Peroxidase conjugated at  
1/10000 dilution Predicted band size : 66 kDa  
Blocking/Dilution buffer: 5% NFDM/TBST.

Please note: All products are 'FOR RESEARCH USE ONLY. NOT FOR USE IN DIAGNOSTIC OR THERAPEUTIC PROCEDURES'.