

# KLF11 Antibody

Purified Rabbit Polyclonal Antibody (Pab)

Catalog # AP51301

## Product Information

---

Application	WB
Primary Accession	<a href="#">O14901</a>
Reactivity	Human
Host	Rabbit
Clonality	Polyclonal
Calculated MW	55139

## Additional Information

---

Gene ID	8462
Other Names	Krueppel-like factor 11, Transforming growth factor-beta-inducible early growth response protein 2, TGFB-inducible early growth response protein 2, TIEG-2, KLF11, FKLF, TIEG2
Target/Specificity	KLH-conjugated synthetic peptide encompassing a sequence within the N-term region of human KLF11. The exact sequence is proprietary.
Dilution	WB~~ 1:1000
Format	0.01M PBS, pH 7.2, 0.09% (W/V) Sodium azide, Glycerol 50%
Storage	Store at -20 °C.Stable for 12 months from date of receipt

## Protein Information

---

Name	KLF11
Synonyms	FKLF, TIEG2
Function	Transcription factor (PubMed: <a href="#">10207080</a> , PubMed: <a href="#">9748269</a> ). Activates the epsilon- and gamma-globin gene promoters and, to a much lower degree, the beta-globin gene and represses promoters containing SP1-like binding inhibiting cell growth (PubMed: <a href="#">10207080</a> , PubMed: <a href="#">16131492</a> , PubMed: <a href="#">9748269</a> ). Represses transcription of SMAD7 which enhances TGF-beta signaling (By similarity). Induces apoptosis (By similarity).
Cellular Location	Nucleus.
Tissue Location	Ubiquitous. Higher expression in erythroid cells.

## Background

---

Transcription factor. Activates the epsilon- and gamma- globin gene promoters and, to a much lower degree, the beta-globin gene and represses promoters containing SP1-like binding inhibiting cell growth. Represses transcription of SMAD7 which enhances TGF-beta signaling. Induces apoptosis.

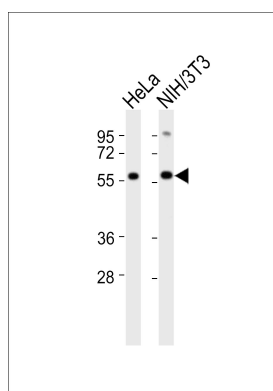
## References

---

Cook T.,et al.J. Biol. Chem. 273:25929-25936(1998).  
Asano H.,et al.Mol. Cell. Biol. 19:3571-3579(1999).  
Schohy S.,et al.Genomics 70:93-101(2000).  
Ota T.,et al.Nat. Genet. 36:40-45(2004).  
Hillier L.W.,et al.Nature 434:724-731(2005).

## Images

---



All lanes : Anti-KLF11 Antibody at 1:1000 dilution Lane 1: HeLa whole cell lysates Lane 2: NIH/3T3 whole cell lysates Lysates/proteins at 20 µg per lane. Secondary Goat Anti-Rabbit IgG, (H+L), Peroxidase conjugated at 1/10000 dilution Predicted band size : 55 kDa Blocking/Dilution buffer: 5% NFDM/TBST.

Please note: All products are 'FOR RESEARCH USE ONLY. NOT FOR USE IN DIAGNOSTIC OR THERAPEUTIC PROCEDURES'.