

Cytokeratin 13 Antibody

Purified Rabbit Polyclonal Antibody (Pab)

Catalog # AP51306

Product Information

Application	WB
Primary Accession	P13646
Reactivity	Human
Host	Rabbit
Clonality	Polyclonal
Calculated MW	49588

Additional Information

Gene ID	3860
Other Names	Keratin, type I cytoskeletal 13, Cytokeratin-13, CK-13, Keratin-13, K13, KRT13
Target/Specificity	KLH conjugated synthetic peptide derived from human Cytokeratin 13
Dilution	WB~~ 1:1000
Format	0.01M PBS, pH 7.2, 0.09% (W/V) Sodium azide, Glycerol 50%
Storage	Store at -20 °C.Stable for 12 months from date of receipt

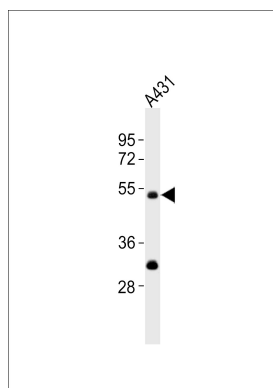
Protein Information

Name	KRT13
Function	Type 1 keratin (Probable). Maintains postnatal tongue mucosal cell homeostasis and tissue organization in response to mechanical stress, potentially via regulation of the G1/S phase cyclins CCNE1 and CCNE2 (By similarity).
Tissue Location	Expressed in some epidermal sweat gland ducts (at protein level) and in exocervix, esophagus and placenta

References

Schulz P.,et al.Biochem. Biophys. Res. Commun. 162:1522-1527(1989).
Mischke D.,et al.Nucleic Acids Res. 17:7984-7984(1989).
Kuruc N.,et al.Differentiation 42:111-123(1989).
Waseem A.,et al.Gene 215:269-279(1998).

Images



Anti-Cytokeratin 13 Antibody at 1:1000 dilution + A431 whole cell lysates. Lysates/proteins at 20 µg per lane. Secondary Goat Anti-Rabbit IgG, (H+L), Peroxidase conjugated at 1/10000 dilution. Predicted band size : 50,39,46 kDa. Blocking/Dilution buffer: 5% NFDM/TBST.

Please note: All products are 'FOR RESEARCH USE ONLY. NOT FOR USE IN DIAGNOSTIC OR THERAPEUTIC PROCEDURES'.