

Cytokeratin 7 Antibody

Purified Rabbit Polyclonal Antibody (Pab)

Catalog # AP51311

Product Information

Application	WB
Primary Accession	P08729
Reactivity	Human, Mouse, Rat
Host	Rabbit
Clonality	Polyclonal
Calculated MW	51386

Additional Information

Gene ID	3855
Other Names	Keratin, type II cytoskeletal 7, Cytokeratin-7, CK-7, Keratin-7, K7, Sarcolectin, Type-II keratin Kb7, KRT7, SCL
Target/Specificity	KLH conjugated synthetic peptide derived from human Cytokeratin 7
Dilution	WB~~ 1:4000
Format	0.01M PBS, pH 7.2, 0.09% (W/V) Sodium azide, Glycerol 50%
Storage	Store at -20 °C.Stable for 12 months from date of receipt

Protein Information

Name	KRT7
Synonyms	SCL
Function	Blocks interferon-dependent interphase and stimulates DNA synthesis in cells. Involved in the translational regulation of the human papillomavirus type 16 E7 mRNA (HPV16 E7).
Cellular Location	Cytoplasm.
Tissue Location	Expressed in cultured epidermal, bronchial and mesothelial cells but absent in colon, ectocervix and liver. Observed throughout the glandular cells in the junction between stomach and esophagus but is absent in the esophagus.

Background

Blocks interferon-dependent interphase and stimulates DNA synthesis in cells. Involved in the translational regulation of the human papillomavirus type 16 E7 mRNA (HPV16 E7).

References

Glass C.,et al.J. Cell Biol. 101:2366-2373(1985).

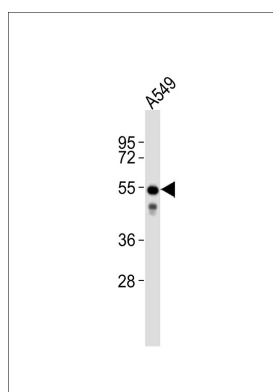
Glass C.,et al.J. Cell Biol. 107:1337-1350(1988).

Kaba A.,et al.Biochimie 81:709-715(1999).

Smith F.J.D.,et al.Biochem. Biophys. Res. Commun. 297:818-827(2002).

Scherer S.E.,et al.Nature 440:346-351(2006).

Images



Anti-Cytokeratin 7 Antibody at 1:4000 dilution + A549 whole cell lysates. Lysates/proteins at 20 µg per lane. Secondary Goat Anti-Rabbit IgG, (H+L), Peroxidase conjugated at 1/10000 dilution. Predicted band size : 51 kDa. Blocking/Dilution buffer: 5% NFDM/TBST.

Please note: All products are 'FOR RESEARCH USE ONLY. NOT FOR USE IN DIAGNOSTIC OR THERAPEUTIC PROCEDURES'.