

# NEURL2 Antibody

Purified Rabbit Polyclonal Antibody (Pab)

Catalog # AP51385

## Product Information

---

Application	WB
Primary Accession	<a href="#">Q9BR09</a>
Reactivity	Human
Host	Rabbit
Clonality	Polyclonal
Calculated MW	31690

## Additional Information

---

Gene ID	140825
Other Names	Neuralized-like protein 2, NEURL2, C20orf163
Target/Specificity	KLH-conjugated synthetic peptide encompassing a sequence within the center region of human NEURL2. The exact sequence is proprietary.
Dilution	WB~~ 1:1000
Format	0.01M PBS, pH 7.2, 0.09% (W/V) Sodium azide, Glycerol 50%
Storage	Store at -20 °C.Stable for 12 months from date of receipt

## Protein Information

---

Name	NEURL2
Synonyms	C20orf163
Function	Plays an important role in the process of myofiber differentiation and maturation. Probable substrate-recognition component of a SCF-like ECS (Elongin BC-CUL2/5-SOCS-box protein) E3 ubiquitin-protein ligase complex, which mediates the ubiquitination of proteins. Probably contributes to catalysis through recognition and positioning of the substrate and the ubiquitin-conjugating enzyme. During myogenesis, controls the ubiquitination and degradation of the specific pool of CTNNB1/beta-catenin located at the sarcolemma (By similarity).
Cellular Location	Cytoplasm.
Tissue Location	Expressed specifically in skeletal and cardiac muscles.

## Background

---

Plays an important role in the process of myofiber differentiation and maturation. Probable substrate-recognition component of a SCF-like ECS (Elongin BC-CUL2/5-SOCS-box protein) E3 ubiquitin-protein ligase complex, which mediates the ubiquitination of proteins. Probably contributes to catalysis through recognition and positioning of the substrate and the ubiquitin-conjugating enzyme. During myogenesis, controls the ubiquitination and degradation of the specific pool of CTNNB1/beta-catenin located at the sarcolemma (By similarity).

## References

---

Ota T.,et al.Nat. Genet. 36:40-45(2004).

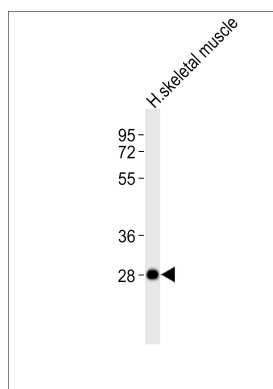
Frigimelica E.,et al.Submitted (JAN-2003) to the EMBL/GenBank/DDBJ databases.

Deloukas P.,et al.Nature 414:865-871(2001).

Nastasi T.,et al.Dev. Cell 6:269-282(2004).

## Images

---



Anti-NEURL2 Antibody at 1:1000 dilution + human skeletal muscle lysates Lysates/proteins at 20 µg per lane. Secondary Goat Anti-Rabbit IgG, (H+L), Peroxidase conjugated at 1/10000 dilution Predicted band size : 32 kDa Blocking/Dilution buffer: 5% NFDM/TBST.

Please note: All products are 'FOR RESEARCH USE ONLY. NOT FOR USE IN DIAGNOSTIC OR THERAPEUTIC PROCEDURES'.