

RCC2 Antibody

Purified Rabbit Polyclonal Antibody (Pab)

Catalog # AP51470

Product Information

Application	WB
Primary Accession	Q9P258
Reactivity	Human, Mouse
Host	Rabbit
Clonality	Polyclonal
Calculated MW	56085

Additional Information

Gene ID	55920
Other Names	Protein RCC2, RCC1-like protein TD-60, Telophase disk protein of 60 kDa, RCC2, KIAA1470, TD60
Target/Specificity	KLH conjugated synthetic peptide derived from human RCC2
Dilution	WB~~ 1:1000
Format	0.01M PBS, pH 7.2, 0.09% (W/V) Sodium azide, Glycerol 50%
Storage	Store at -20 °C.Stable for 12 months from date of receipt

Protein Information

Name	RCC2
Synonyms	KIAA1470, TD60
Function	Multifunctional protein that may affect its functions by regulating the activity of small GTPases, such as RAC1 and RALA (PubMed: 12919680 , PubMed: 25074804 , PubMed: 26158537 , PubMed: 28869598). Required for normal progress through the cell cycle, both during interphase and during mitosis (PubMed: 12919680 , PubMed: 23388455 , PubMed: 26158537). Required for the presence of normal levels of MAD2L1, AURKB and BIRC5 on inner centromeres during mitosis, and for normal attachment of kinetochores to mitotic spindles (PubMed: 12919680 , PubMed: 26158537). Required for normal organization of the microtubule cytoskeleton in interphase cells (PubMed: 23388455). Functions as guanine nucleotide exchange factor (GEF) for RALA (PubMed: 26158537). Interferes with the activation of RAC1 by guanine nucleotide exchange factors (PubMed: 25074804). Prevents accumulation of active, GTP-bound RAC1, and suppresses RAC1-mediated reorganization of the actin cytoskeleton and formation of membrane

protrusions (PubMed:[25074804](#), PubMed:[28869598](#)). Required for normal cellular responses to contacts with the extracellular matrix of adjacent cells, and for directional cell migration in response to a fibronectin gradient (in vitro) (PubMed:[25074804](#), PubMed:[28869598](#)).

Cellular Location

Nucleus, nucleolus. Nucleus. Cytoplasm, cytoskeleton. Chromosome, centromere. Cytoplasm, cytoskeleton, spindle. Chromosome. Midbody. Cell membrane; Peripheral membrane protein; Cytoplasmic side. Note=Appears in the nucleus at G2, then concentrates at the inner centromere region of chromosomes during prophase. Redistributes to the midzone of the mitotic spindle during anaphase. Here, the protein covers the entire equatorial diameter from cortex to cortex (PubMed:12919680, PubMed:1939370, PubMed:7559776, PubMed:9914378). Colocalizes with cytoplasmic microtubules in interphase cells (PubMed:23388455). Colocalizes with RAC1 at the cell membrane (PubMed:25074804).

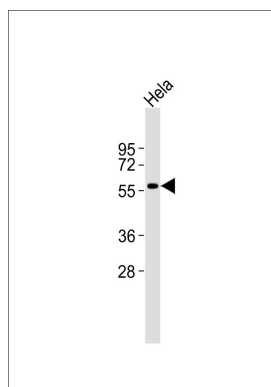
Background

Required for completion of mitosis and cytokinesis. May function as a guanine nucleotide exchange factor for the small GTPase RAC1.

References

Mollinari C.,et al.Dev. Cell 5:295-307(2003).
Nagase T.,et al.DNA Res. 7:143-150(2000).
Bechtel S.,et al.BMC Genomics 8:399-399(2007).
Andreassen P.R.,et al.J. Cell Sci. 99:523-534(1991).
Martineau S.N.,et al.J. Cell Biol. 131:191-205(1995).

Images



Anti-RCC2 Antibody at 1:1000 dilution + HeLa whole cell lysates Lysates/proteins at 20 µg per lane. Secondary Goat Anti-Rabbit IgG, (H+L), Peroxidase conjugated at 1/10000 dilution Predicted band size : 56 kDa
Blocking/Dilution buffer: 5% NFDm/TBST.

Please note: All products are 'FOR RESEARCH USE ONLY. NOT FOR USE IN DIAGNOSTIC OR THERAPEUTIC PROCEDURES'.