

Radixin Antibody

Purified Rabbit Polyclonal Antibody (Pab)

Catalog # AP51471

Product Information

Application	WB
Primary Accession	P35241
Reactivity	Human, Mouse, Rat
Host	Rabbit
Clonality	Polyclonal
Calculated MW	68564

Additional Information

Gene ID	5962
Other Names	Radixin, RDX
Target/Specificity	KLH conjugated synthetic peptide derived from human Radixin
Dilution	WB~~ 1:1000
Format	0.01M PBS, pH 7.2, 0.09% (W/V) Sodium azide, Glycerol 50%
Storage	Store at -20 °C.Stable for 12 months from date of receipt

Protein Information

Name	RDX
Function	Probably plays a crucial role in the binding of the barbed end of actin filaments to the plasma membrane.
Cellular Location	Cell membrane; Peripheral membrane protein; Cytoplasmic side. Cytoplasm, cytoskeleton. Cleavage furrow. Cell projection, microvillus {ECO:0000250 UniProtKB:P26043}. Cell projection, stereocilium {ECO:0000250 UniProtKB:P26043}. Note=Enriched at the stereocilium base with very low levels in the shaft of stereociliary bundles (By similarity). Highly concentrated in the undercoat of the cell-to-cell adherens junction and the cleavage furrow in the interphase and mitotic phase, respectively {ECO:0000250 UniProtKB:P26043}

Background

Probably plays a crucial role in the binding of the barbed end of actin filaments to the plasma membrane.

References

Wilgenbus K.K.,et al.Genomics 16:199-206(1993).

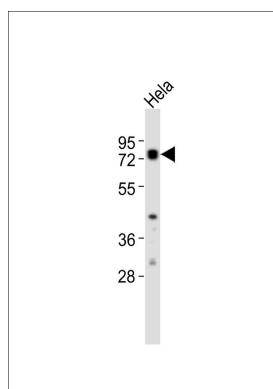
Ota T.,et al.Nat. Genet. 36:40-45(2004).

Khan S.Y.,et al.Hum. Mutat. 28:417-423(2007).

Taylor T.D.,et al.Nature 440:497-500(2006).

Mural R.J.,et al.Submitted (JUL-2005) to the EMBL/GenBank/DDBJ databases.

Images



Anti-Radixin Antibody at 1:1000 dilution + HeLa whole cell lysates. Lysates/proteins at 20 µg per lane. Secondary Goat Anti-Rabbit IgG, (H+L), Peroxidase conjugated at 1/10000 dilution. Predicted band size : 69 kDa. Blocking/Dilution buffer: 5% NFDM/TBST.

Please note: All products are 'FOR RESEARCH USE ONLY. NOT FOR USE IN DIAGNOSTIC OR THERAPEUTIC PROCEDURES'.