

# RIT1 Antibody

Purified Rabbit Polyclonal Antibody (Pab)

Catalog # AP51476

## Product Information

---

|                   |                        |
|-------------------|------------------------|
| Application       | WB                     |
| Primary Accession | <a href="#">Q92963</a> |
| Reactivity        | Human                  |
| Host              | Rabbit                 |
| Clonality         | Polyclonal             |
| Calculated MW     | 25145                  |

## Additional Information

---

|                    |  |
|--------------------|--|
| Gene ID            | 6016   |
| Other Names        | GTP-binding protein Rit1, Ras-like protein expressed in many tissues, Ras-like without CAAX protein 1, RIT1, RIBB, RIT, ROC1 |
| Target/Specificity | KLH conjugated synthetic peptide derived from human RIT1   |
| Dilution           | WB~~ 1:1000  |
| Format             | 0.01M PBS, pH 7.2, 0.09% (W/V) Sodium azide, Glycerol 50%  |
| Storage            | Store at -20 °C.Stable for 12 months from date of receipt  |

## Protein Information

---

|                   |   |
|-------------------|---|
| Name              | RIT1  |
| Synonyms          | RIBB, RIT, ROC1   |
| Function          | Plays a crucial role in coupling NGF stimulation to the activation of both EPHB2 and MAPK14 signaling pathways and in NGF- dependent neuronal differentiation. Involved in ELK1 transactivation through the Ras-MAPK signaling cascade that mediates a wide variety of cellular functions, including cell proliferation, survival, and differentiation. |
| Cellular Location | Cell membrane.  |
| Tissue Location   | Expressed in many tissues.  |

## Background

---

Plays a crucial role in coupling NGF stimulation to the activation of both EPHB2 and MAPK14 signaling pathways and in NGF- dependent neuronal differentiation. Involved in ELK1 transactivation through the Ras-MAPK signaling cascade that mediates a wide variety of cellular functions, including cell proliferation, survival, and differentiation.

## References

---

Lee C.H.J.,et al.J. Neurosci. 16:6784-6794(1996).

Wes P.D.,et al.EMBO J. 15:5839-5848(1996).

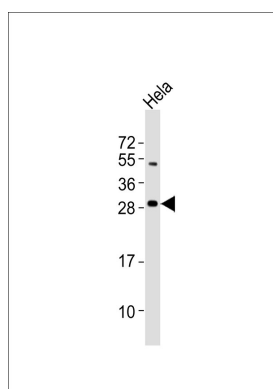
Kawasaki H.,et al.Submitted (JUL-1997) to the EMBL/GenBank/DDBJ databases.

Shao H.,et al.Arch. Biochem. Biophys. 371:207-219(1999).

Puhl H.L. III,et al.Submitted (MAR-2002) to the EMBL/GenBank/DDBJ databases.

## Images

---



Anti-RIT1 Antibody at 1:1000 dilution + HeLa whole cell lysates. Lysates/proteins at 20 µg per lane. Secondary Goat Anti-Rabbit IgG, (H+L), Peroxidase conjugated at 1/10000 dilution. Predicted band size : 25 kDa. Blocking/Dilution buffer: 5% NFDM/TBST.

Please note: All products are 'FOR RESEARCH USE ONLY. NOT FOR USE IN DIAGNOSTIC OR THERAPEUTIC PROCEDURES'.