

# Septin 7 Antibody

Purified Rabbit Polyclonal Antibody (Pab)

Catalog # AP51501

## Product Information

---

Application	WB
Primary Accession	<a href="#">Q16181</a>
Reactivity	Human, Mouse, Rat
Host	Rabbit
Clonality	Polyclonal
Calculated MW	50680

## Additional Information

---

Gene ID	989
Other Names	Septin-7, CDC10 protein homolog, SEPT7, CDC10
Target/Specificity	KLH conjugated synthetic peptide derived from human Septin 7
Dilution	WB~~ 1:1000
Format	0.01M PBS, pH 7.2, 0.09% (W/V) Sodium azide, Glycerol 50%
Storage	Store at -20 °C.Stable for 12 months from date of receipt

## Protein Information

---

Name	SEPTIN7 ( <a href="#">HGNC:1717</a> )
Synonyms	CDC10, SEPT7
Function	Filament-forming cytoskeletal GTPase. Required for normal organization of the actin cytoskeleton. Required for normal progress through mitosis. Involved in cytokinesis. Required for normal association of CENPE with the kinetochore. Plays a role in ciliogenesis and collective cell movements. Forms a filamentous structure with SEPTIN12, SEPTIN6, SEPTIN2 and probably SEPTIN4 at the sperm annulus which is required for the structural integrity and motility of the sperm tail during postmeiotic differentiation (PubMed: <a href="#">25588830</a> ).
Cellular Location	Cytoplasm. Chromosome, centromere, kinetochore Cytoplasm, cytoskeleton, spindle Cleavage furrow. Midbody. Cytoplasm, cytoskeleton, cilium axoneme. Cell projection, cilium, flagellum. Note=Distributed throughout the cytoplasm in prometaphase cells. Associated with the spindle during metaphase. Associated with the central spindle and at the cleavage furrow in anaphase cells. Detected at the midbody in telophase Associated with actin stress fibers

(By similarity). Found in the sperm annulus (PubMed:25588830).  
{ECO:0000250, ECO:0000269 | PubMed:25588830}

## Tissue Location

Widely expressed..

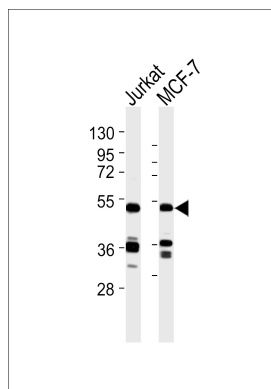
## Background

Filament-forming cytoskeletal GTPase. Required for normal organization of the actin cytoskeleton. Required for normal progress through mitosis. Involved in cytokinesis. Required for normal association of CENPE with the kinetochore. Plays a role in ciliogenesis and collective cell movements.

## References

Nakatsuru S.,et al.Biochem. Biophys. Res. Commun. 202:82-87(1994).  
Nagata K.,et al.J. Biol. Chem. 279:55895-55904(2004).  
Hall P.A.,et al.J. Pathol. 206:269-278(2005).  
Kremer B.E.,et al.Mol. Biol. Cell 16:4648-4659(2005).  
Rush J.,et al.Nat. Biotechnol. 23:94-101(2005).

## Images



All lanes : Anti-Septin 7 Antibody at 1:1000 dilution Lane  
1: Jurkat whole cell lysates Lane 2: MCF-7 whole cell  
lysates Lysates/proteins at 20 µg per lane. Secondary  
Goat Anti-Rabbit IgG, (H+L), Peroxidase conjugated at  
1/10000 dilution Predicted band size : 51 kDa  
Blocking/Dilution buffer: 5% NFDM/TBST.

Please note: All products are 'FOR RESEARCH USE ONLY. NOT FOR USE IN DIAGNOSTIC OR THERAPEUTIC PROCEDURES'.