

Serpin B4 Antibody

Purified Rabbit Polyclonal Antibody (Pab)

Catalog # AP51504

Product Information

| | |
|--------------------------|------------------------|
| Application | WB |
| Primary Accession | P48594 |
| Reactivity | Human, Mouse, Rat |
| Host | Rabbit |
| Clonality | Polyclonal |
| Calculated MW | 44854 |

Additional Information

| | |
|---------------------------|--|
| Gene ID | 6318 |
| Other Names | Serpin B4, Leupin, Peptidase inhibitor 11, PI-11, Squamous cell carcinoma antigen 2, SCCA-2, SERPINB4, PI11, SCCA2 |
| Target/Specificity | KLH conjugated synthetic peptide derived from human Serpin B4 |
| Dilution | WB~~ 1:1000 |
| Format | 0.01M PBS, pH 7.2, 0.09% (W/V) Sodium azide, Glycerol 50% |
| Storage | Store at -20 °C.Stable for 12 months from date of receipt |

Protein Information

| | |
|--------------------------|---|
| Name | SERPINB4 |
| Synonyms | PI11, SCCA2 |
| Function | May act as a protease inhibitor to modulate the host immune response against tumor cells. |
| Cellular Location | Cytoplasm. Note=Seems to also be secreted in plasma by cancerous cells but at a low level |
| Tissue Location | Squamous cells. |

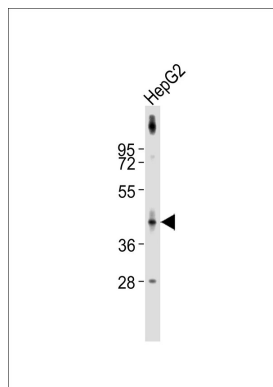
Background

May act as a protease inhibitor to modulate the host immune response against tumor cells.

References

Barnes R.C.,et al.FEBS Lett. 373:61-65(1995).
Schneider S.S.,et al.Proc. Natl. Acad. Sci. U.S.A. 92:3147-3151(1995).
Hamada K.,et al.Biochim. Biophys. Acta 1518:124-131(2001).
Ota T.,et al.Nat. Genet. 36:40-45(2004).
Bienvenut W.V.,et al.Submitted (FEB-2008) to UniProtKB.

Images



Anti-Serpin B4 Antibody at 1:1000 dilution + HepG2 whole cell lysates. Lysates/proteins at 20 µg per lane. Secondary Goat Anti-Rabbit IgG, (H+L), Peroxidase conjugated at 1/10000 dilution. Predicted band size : 45 kDa. Blocking/Dilution buffer: 5% NFDm/TBST.

Please note: All products are 'FOR RESEARCH USE ONLY. NOT FOR USE IN DIAGNOSTIC OR THERAPEUTIC PROCEDURES'.