

# ARALAR1 Antibody

Purified Rabbit Polyclonal Antibody (Pab)

Catalog # AP51515

## Product Information

---

Application	WB
Primary Accession	<a href="#">O75746</a>
Reactivity	Human, Rat
Host	Rabbit
Clonality	Polyclonal
Calculated MW	74762

## Additional Information

---

Gene ID	8604
Other Names	Calcium-binding mitochondrial carrier protein Aralar1, Mitochondrial aspartate glutamate carrier 1, Solute carrier family 25 member 12, SLC25A12, ARALAR1
Target/Specificity	KLH conjugated synthetic peptide derived from human ARALAR1
Dilution	WB~~ 1:1000
Format	0.01M PBS, pH 7.2, 0.09% (W/V) Sodium azide, Glycerol 50%
Storage	Store at -20 °C.Stable for 12 months from date of receipt

## Protein Information

---

Name	SLC25A12 ( <a href="#">HGNC:10982</a> )
Function	Mitochondrial electrogenic aspartate/glutamate antiporter that favors efflux of aspartate and entry of glutamate and proton within the mitochondria as part of the malate-aspartate shuttle (PubMed: <a href="#">11566871</a> , PubMed: <a href="#">19641205</a> , PubMed: <a href="#">24515575</a> , PubMed: <a href="#">38945283</a> ). Also mediates the uptake of L-cysteinesulfinatate (3-sulfinat-L-alanine) by mitochondria in exchange of L-glutamate and proton (PubMed: <a href="#">11566871</a> ). Can also exchange L-cysteinesulfinatate with aspartate in their anionic form without any proton translocation (PubMed: <a href="#">11566871</a> ). Lacks transport activity towards L-glutamine or gamma-aminobutyric acid (GABA) (PubMed: <a href="#">38945283</a> ).
Cellular Location	Mitochondrion inner membrane; Multi-pass membrane protein
Tissue Location	Expressed predominantly in the heart and skeletal muscle, weakly in brain and kidney.

## Background

---

Catalyzes the calcium-dependent exchange of cytoplasmic glutamate with mitochondrial aspartate across the mitochondrial inner membrane. May have a function in the urea cycle.

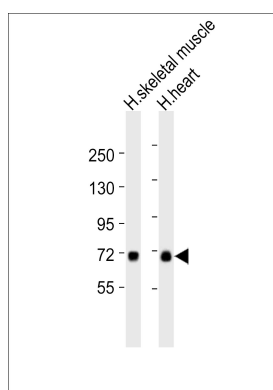
## References

---

Del Arco A.,et al.J. Biol. Chem. 273:23327-23334(1998).  
Palmieri L.,et al.EMBO J. 20:5060-5069(2001).  
Hillier L.W.,et al.Nature 434:724-731(2005).  
Mural R.J.,et al.Submitted (SEP-2005) to the EMBL/GenBank/DDBJ databases.  
Kobayashi K.,et al.Nat. Genet. 22:159-163(1999).

## Images

---



All lanes : Anti-ARALAR1 Antibody at 1:1000 dilution Lane 1: human skeletal muscle lysates Lane 2: human heart lysates Lysates/proteins at 20 µg per lane. Secondary Goat Anti-Rabbit IgG, (H+L), Peroxidase conjugated at 1/10000 dilution Predicted band size : 75 kDa Blocking/Dilution buffer: 5% NFDM/TBST.

Please note: All products are 'FOR RESEARCH USE ONLY. NOT FOR USE IN DIAGNOSTIC OR THERAPEUTIC PROCEDURES'.