

SNAP25 Antibody

Purified Rabbit Polyclonal Antibody (Pab)

Catalog # AP51530

Product Information

Application	WB
Primary Accession	P60880
Reactivity	Human, Mouse, Rat
Host	Rabbit
Clonality	Polyclonal
Calculated MW	23315

Additional Information

Gene ID	6616
Other Names	Synaptosomal-associated protein 25, SNAP-25, Super protein, SUP, Synaptosomal-associated 25 kDa protein, SNAP25, SNAP
Target/Specificity	KLH conjugated synthetic peptide derived from human SNAP25
Dilution	WB~~ 1:1000
Format	0.01M PBS, pH 7.2, 0.09% (W/V) Sodium azide, Glycerol 50%
Storage	Store at -20 °C.Stable for 12 months from date of receipt

Protein Information

Name	SNAP25
Synonyms	SNAP
Function	t-SNARE involved in the molecular regulation of neurotransmitter release. May play an important role in the synaptic function of specific neuronal systems. Associates with proteins involved in vesicle docking and membrane fusion. Regulates plasma membrane recycling through its interaction with CENPF. Modulates the gating characteristics of the delayed rectifier voltage-dependent potassium channel KCNB1 in pancreatic beta cells.
Cellular Location	Cytoplasm, perinuclear region {ECO:0000250 UniProtKB:P60879}. Cell membrane {ECO:0000250 UniProtKB:P60881}; Lipid-anchor {ECO:0000250 UniProtKB:P60879}. Synapse, synaptosome {ECO:0000250 UniProtKB:P60879}. Photoreceptor inner segment {ECO:0000250 UniProtKB:P60879}. Note=Membrane association requires palmitoylation. Expressed throughout cytoplasm, concentrating at the perinuclear region. Colocalizes with KCNB1 at the cell membrane (By

similarity). Colocalizes with PLCL1 at the cell membrane (By similarity).
{ECO:0000250|UniProtKB:P60879, ECO:0000250|UniProtKB:P60881}

Tissue Location

Neurons of the neocortex, hippocampus, piriform cortex, anterior thalamic nuclei, pontine nuclei, and granule cells of the cerebellum

Background

t-SNARE involved in the molecular regulation of neurotransmitter release. May play an important role in the synaptic function of specific neuronal systems. Associates with proteins involved in vesicle docking and membrane fusion. Regulates plasma membrane recycling through its interaction with CENPF.

References

Bark I.C.,et al.Gene 139:291-292(1994).

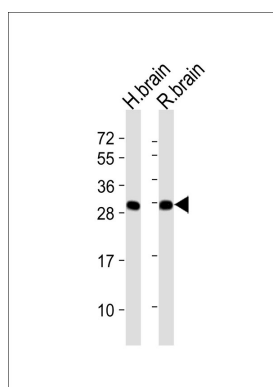
Zhao N.,et al.Gene 145:313-314(1994).

Jagadish M.N.,et al.Biochem. J. 317:945-954(1996).

Kalnine N.,et al.Submitted (OCT-2004) to the EMBL/GenBank/DDBJ databases.

Ota T.,et al.Nat. Genet. 36:40-45(2004).

Images



All lanes : Anti-SNAP25 Antibody at 1:1000 dilution Lane 1: human brain lysates Lane 2: rat brain lysates
Lysates/proteins at 20 µg per lane. Secondary Goat Anti-Rabbit IgG, (H+L), Peroxidase conjugated at 1/10000 dilution Predicted band size : 23 kDa Blocking/Dilution buffer: 5% NFDM/TBST.

Please note: All products are 'FOR RESEARCH USE ONLY. NOT FOR USE IN DIAGNOSTIC OR THERAPEUTIC PROCEDURES'.