

# SRY Antibody

Purified Rabbit Polyclonal Antibody (Pab)

Catalog # AP51535

## Product Information

Application	WB
Primary Accession	<a href="#">Q05066</a>
Reactivity	Human
Host	Rabbit
Clonality	Polyclonal
Calculated MW	23884

## Additional Information

Gene ID	6736
Other Names	Sex-determining region Y protein, Testis-determining factor, SRY, TDF
Target/Specificity	KLH conjugated synthetic peptide derived from human SRY
Dilution	WB~~ 1:1000
Format	0.01M PBS, pH 7.2, 0.09% (W/V) Sodium azide, Glycerol 50%
Storage	Store at -20 °C.Stable for 12 months from date of receipt

## Protein Information

Name	SRY {ECO:0000303   PubMed:1695712, ECO:0000312   HGNC:HGNC:11311}
Function	<p>Transcriptional regulator that controls a genetic switch in male development (PubMed:<a href="#">11563911</a>). It is necessary and sufficient for initiating male sex determination by directing the development of supporting cell precursors (pre-Sertoli cells) as Sertoli rather than granulosa cells (PubMed:<a href="#">16414182</a>, PubMed:<a href="#">16996051</a>). Involved in different aspects of gene regulation including promoter activation or repression (PubMed:<a href="#">9525897</a>). Binds to the DNA consensus sequence 5'- [AT]AACAA[AT]-3' (PubMed:<a href="#">11563911</a>, PubMed:<a href="#">1425584</a>, PubMed:<a href="#">15170344</a>, PubMed:<a href="#">8159753</a>, PubMed:<a href="#">8265659</a>). SRY HMG box recognizes DNA by partial intercalation in the minor groove and promotes DNA bending (PubMed:<a href="#">11563911</a>, PubMed:<a href="#">1425584</a>, PubMed:<a href="#">15170344</a>, PubMed:<a href="#">16762365</a>, PubMed:<a href="#">8159753</a>, PubMed:<a href="#">8265659</a>). Also involved in pre-mRNA splicing (PubMed:<a href="#">11818535</a>). In male adult brain involved in the maintenance of motor functions of dopaminergic neurons (By similarity).</p>
Cellular Location	Nucleus speckle. Cytoplasm Nucleus. Note=Acetylation contributes to its nuclear localization and deacetylation by HDAC3 induces a cytoplasmic

delocalization (PubMed:15297880). Colocalizes with SOX6 in speckles (PubMed:11818535). Colocalizes with CAML in the nucleus (PubMed:15746192). Colocalizes in the nucleus with ZNF208 isoform KRAB-O and tyrosine hydroxylase (TH) (By similarity). Nuclear import is facilitated by XPO4, a protein that usually acts as a nuclear export signal receptor (PubMed:19349578). {ECO:0000250|UniProtKB:Q05738, ECO:0000269|PubMed:11818535, ECO:0000269|PubMed:15297880, ECO:0000269|PubMed:15746192, ECO:0000269|PubMed:19349578}

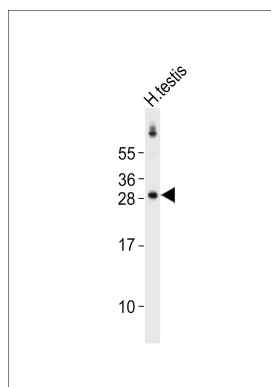
## Background

Transcriptional regulator that controls a genetic switch in male development. It is necessary and sufficient for initiating male sex determination by directing the development of supporting cell precursors (pre-Sertoli cells) as Sertoli rather than granulosa cells (By similarity). In male adult brain involved in the maintenance of motor functions of dopaminergic neurons (By similarity). Involved in different aspects of gene regulation including promoter activation or repression (By similarity). Promotes DNA bending. SRY HMG box recognizes DNA by partial intercalation in the minor groove. Also involved in pre-mRNA splicing. Binds to the DNA consensus sequence 5'-[AT]AACAA[AT]-3'.

## References

Sinclair A.H.,et al.Nature 346:240-244(1990).  
Su H.,et al.Am. J. Hum. Genet. 52:24-38(1993).  
Behlke M.A.,et al.Genomics 17:736-739(1993).  
Whitfield L.S.,et al.Genomics 27:306-311(1995).  
Ferrari S.,et al.EMBO J. 11:4497-4506(1992).

## Images



Anti-SRY Antibody at 1:1000 dilution + human testis lysates Lysates/proteins at 20 µg per lane. Secondary Goat Anti-Rabbit IgG, (H+L), Peroxidase conjugated at 1/10000 dilution Predicted band size : 24 kDa  
Blocking/Dilution buffer: 5% NFDm/TBST.

Please note: All products are 'FOR RESEARCH USE ONLY. NOT FOR USE IN DIAGNOSTIC OR THERAPEUTIC PROCEDURES'.