

# THRA Antibody

Purified Rabbit Polyclonal Antibody (Pab)

Catalog # AP51562

## Product Information

---

<b>Application</b>	WB
<b>Primary Accession</b>	<a href="#">P10827</a>
<b>Reactivity</b>	Human, Mouse, Rat
<b>Host</b>	Rabbit
<b>Clonality</b>	Polyclonal
<b>Calculated MW</b>	54816

## Additional Information

---

<b>Gene ID</b>	7067
<b>Other Names</b>	Thyroid hormone receptor alpha, Nuclear receptor subfamily 1 group A member 1, V-erbA-related protein 7, EAR-7, c-erbA-1, c-erbA-alpha, THRA, EAR7, ERBA1, NR1A1, THRA1, THRA2
<b>Target/Specificity</b>	KLH conjugated synthetic peptide derived from human THRA
<b>Dilution</b>	WB~~ 1:1000
<b>Format</b>	0.01M PBS, pH 7.2, 0.09% (W/V) Sodium azide, Glycerol 50%
<b>Storage</b>	Store at -20 °C.Stable for 12 months from date of receipt

## Protein Information

---

<b>Name</b>	THRA
<b>Synonyms</b>	EAR7, ERBA1, NR1A1, THRA1, THRA2
<b>Function</b>	[Isoform Alpha-1]: Nuclear hormone receptor that can act as a repressor or activator of transcription. High affinity receptor for thyroid hormones, including triiodothyronine and thyroxine.
<b>Cellular Location</b>	Nucleus.

## Background

---

Nuclear hormone receptor that can act as a repressor or activator of transcription. High affinity receptor for thyroid hormones, including triiodothyronine and thyroxine.

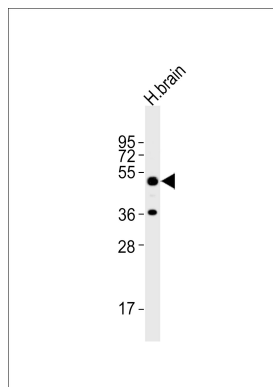
## References

---

Laudet V.,et al.Nucleic Acids Res. 19:1105-1112(1991).  
Miyajima N.,et al.Cell 57:31-39(1989).  
Nakai A.,et al.Proc. Natl. Acad. Sci. U.S.A. 85:2781-2785(1988).  
Pfahl M.,et al.Nucleic Acids Res. 15:9613-9613(1987).  
Nakai A.,et al.Mol. Endocrinol. 2:1087-1092(1988).

## Images

---



Anti-THRA Antibody at 1:1000 dilution + human brain lysates Lysates/proteins at 20 µg per lane. Secondary Goat Anti-Rabbit IgG, (H+L), Peroxidase conjugated at 1/10000 dilution Predicted band size : 55 kDa  
Blocking/Dilution buffer: 5% NFDM/TBST.

Please note: All products are 'FOR RESEARCH USE ONLY. NOT FOR USE IN DIAGNOSTIC OR THERAPEUTIC PROCEDURES'.