

RPS18 Antibody

Purified Rabbit Polyclonal Antibody (Pab)

Catalog # AP51705

Product Information

Application	WB
Primary Accession	P62269
Reactivity	Human, Mouse, Rat
Host	Rabbit
Clonality	Polyclonal
Calculated MW	17719

Additional Information

Gene ID	6222
Other Names	40S ribosomal protein S18, Ke-3, Ke3, RPS18, D6S218E
Target/Specificity	KLH-conjugated synthetic peptide encompassing a sequence within the center region of human RPS18. The exact sequence is proprietary.
Dilution	WB~~ 1:1000
Format	0.01M PBS, pH 7.2, 0.09% (W/V) Sodium azide, Glycerol 50%
Storage	Store at -20 °C.Stable for 12 months from date of receipt

Protein Information

Name	RPS18
Synonyms	D6S218E
Function	Component of the small ribosomal subunit. The ribosome is a large ribonucleoprotein complex responsible for the synthesis of proteins in the cell.
Cellular Location	Cytoplasm.

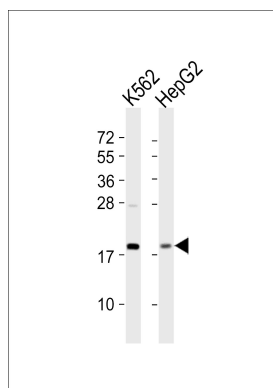
Background

Located at the top of the head of the 40S subunit, it contacts several helices of the 18S rRNA (By similarity).

References

Chassin D.,et al.Nucleic Acids Res. 21:745-745(1993).
Mungall A.J.,et al.Nature 425:805-811(2003).
Mural R.J.,et al.Submitted (JUL-2005) to the EMBL/GenBank/DDBJ databases.
Bienvenut W.V.,et al.Submitted (NOV-2006) to UniProtKB.
Vladimirov S.N.,et al.Eur. J. Biochem. 239:144-149(1996).

Images



All lanes : Anti-RPS18 Antibody at 1:1000 dilution Lane 1: K562 whole cell lysates Lane 2: HepG2 whole cell lysates Lysates/proteins at 20 µg per lane. Secondary Goat Anti-Rabbit IgG, (H+L), Peroxidase conjugated at 1/10000 dilution Predicted band size : 18 kDa Blocking/Dilution buffer: 5% NFDM/TBST.

Please note: All products are 'FOR RESEARCH USE ONLY. NOT FOR USE IN DIAGNOSTIC OR THERAPEUTIC PROCEDURES'.