

ZDHHC21 Antibody (N-term)

Affinity Purified Rabbit Polyclonal Antibody (Pab)

Catalog # AP5172A

Product Information

Application	WB, IHC-P, FC, E
Primary Accession	Q8IVQ6
Other Accession	A2VDT6
Reactivity	Human, Mouse
Predicted	Bovine
Host	Rabbit
Clonality	Polyclonal
Isotype	Rabbit IgG
Clone Names	RB26333
Calculated MW	31385
Antigen Region	59-87

Additional Information

Gene ID	340481
Other Names	Palmitoyltransferase ZDHHC21, Zinc finger DHHC domain-containing protein 21, DHHC-21, ZDHHC21
Target/Specificity	This ZDHHC21 antibody is generated from rabbits immunized with a KLH conjugated synthetic peptide between 59-87 amino acids from the N-terminal region of human ZDHHC21.
Dilution	WB~~1:1000 IHC-P~~1:100~500 FC~~1:10~50 E~~Use at an assay dependent concentration.
Format	Purified polyclonal antibody supplied in PBS with 0.09% (W/V) sodium azide. This antibody is purified through a protein A column, followed by peptide affinity purification.
Storage	Maintain refrigerated at 2-8°C for up to 2 weeks. For long term storage store at -20°C in small aliquots to prevent freeze-thaw cycles.
Precautions	ZDHHC21 Antibody (N-term) is for research use only and not for use in diagnostic or therapeutic procedures.

Protein Information

Name	ZDHHC21 (HGNC:20750)
Function	Palmitoyltransferase that catalyzes the addition of palmitate onto various

protein substrates (PubMed:[22031296](#)). Palmitoylates sex steroid hormone receptors, including ESR1, PGR and AR, thereby regulating their targeting to the plasma membrane (PubMed:[22031296](#)). This affects rapid intracellular signaling by sex hormones via ERK and AKT kinases and the generation of cAMP, but does not affect that mediated by their nuclear receptor (PubMed:[22031296](#)). Palmitoylates FYN, regulates its localization in hair follicles and plays a key role in epidermal homeostasis and hair follicle differentiation. Through the palmitoylation of PLCB1 and the regulation of PLCB1 downstream signaling may indirectly regulate the function of the endothelial barrier and the adhesion of leukocytes to the endothelium. Also has a palmitoyltransferase activity toward ADRA1D, positively regulating its activity and expression and may thereby play a role in vascular contraction. May also palmitoylate eNOS and LCK (By similarity).

Cellular Location

Golgi apparatus membrane; Multi-pass membrane protein. Golgi apparatus, cis-Golgi network membrane {ECO:0000250|UniProtKB:Q9D270}; Multi-pass membrane protein. Cell membrane; Multi-pass membrane protein

Tissue Location

Widely expressed..

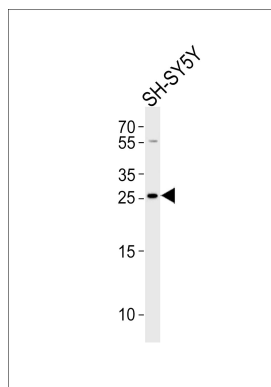
Background

The function of this protein has not been specifically defined.

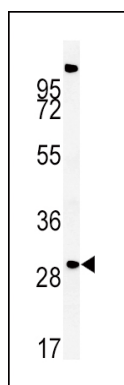
References

Mill, P., et al. PLoS Genet. 5 (11), E1000748 (2009)
 Le Clerc, S., et al. J. Infect. Dis. 200(8):1194-1201(2009)
 Humphray, S.J., et al. Nature 429(6990):369-374(2004)

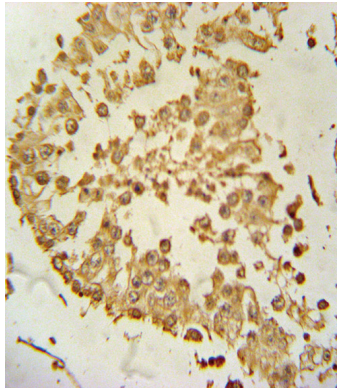
Images



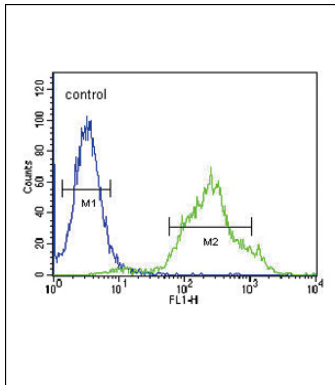
Western blot analysis of lysate from SH-SY5Y cell line, using ZDHHC21 Antibody (N-term)(AP5172a). AP5172a was diluted at 1:1000. A goat anti-rabbit IgG H&L(HRP) at 1:10000 dilution was used as the secondary antibody. Lysate at 20ug.



Western blot analysis of ZDHHC21 Antibody (N-term) (Cat. #AP5172a) in mouse liver tissue lysates (35ug/lane).ZDHHC21 (arrow) was detected using the purified Pab.



ZDHHC21 Antibody (N-term) (Cat. #AP5172a) immunohistochemistry analysis in formalin fixed and paraffin embedded human testis tissue followed by peroxidase conjugation of the secondary antibody and DAB staining. This data demonstrates the use of the ZDHHC21 Antibody (N-term) for immunohistochemistry. Clinical relevance has not been evaluated.



ZDHHC21 Antibody (N-term) (Cat. #AP5172a) flow cytometric analysis of 293 cells (right histogram) compared to a negative control cell (left histogram). FITC-conjugated goat-anti-rabbit secondary antibodies were used for the analysis.

Please note: All products are 'FOR RESEARCH USE ONLY. NOT FOR USE IN DIAGNOSTIC OR THERAPEUTIC PROCEDURES'.