

CXADR Antibody

Purified Rabbit Polyclonal Antibody (Pab)

Catalog # AP51754

Product Information

Application	WB
Primary Accession	P78310
Reactivity	Human, Mouse, Rat
Host	Rabbit
Clonality	Polyclonal
Calculated MW	40030

Additional Information

Gene ID	1525
Other Names	Coxsackievirus and adenovirus receptor, CAR, hCAR, CVB3-binding protein, Coxsackievirus B-adenovirus receptor, HCVADR, CXADR, CAR
Target/Specificity	KLH conjugated synthetic peptide derived from human CXADR
Dilution	WB~~ 1:1000
Format	0.01M PBS, pH 7.2, 0.09% (W/V) Sodium azide, Glycerol 50%
Storage	Store at -20 °C.Stable for 12 months from date of receipt

Protein Information

Name	CXADR
Synonyms	CAR
Function	Component of the epithelial apical junction complex that may function as a homophilic cell adhesion molecule and is essential for tight junction integrity. Also involved in transepithelial migration of leukocytes through adhesive interactions with JAML a transmembrane protein of the plasma membrane of leukocytes. The interaction between both receptors also mediates the activation of gamma-delta T-cells, a subpopulation of T-cells residing in epithelia and involved in tissue homeostasis and repair. Upon epithelial CXADR-binding, JAML induces downstream cell signaling events in gamma-delta T-cells through PI3- kinase and MAP kinases. It results in proliferation and production of cytokines and growth factors by T-cells that in turn stimulate epithelial tissues repair.
Cellular Location	[Isoform 1]: Cell membrane; Single-pass type I membrane protein. Basolateral cell membrane; Single-pass type I membrane protein. Cell junction, tight

junction. Cell junction, adherens junction. Note=In epithelial cells localizes to the apical junction complex composed of tight and adherens junctions (PubMed:12297051). In airway epithelial cells localized to basolateral membrane but not to apical surface (PubMed:11316797). [Isoform 4]: Secreted

Tissue Location

Expressed in pancreas, brain, heart, small intestine, testis, prostate and at a lower level in liver and lung Isoform 5 is ubiquitously expressed. Isoform 3 is expressed in heart, lung and pancreas. In skeletal muscle, isoform 1 is found at the neuromuscular junction and isoform 2 is found in blood vessels. In cardiac muscle, isoform 1 and isoform 2 are found at intercalated disks. In heart expressed in subendothelial layers of the vessel wall but not in the luminal endothelial surface. Expression is elevated in hearts with dilated cardiomyopathy.

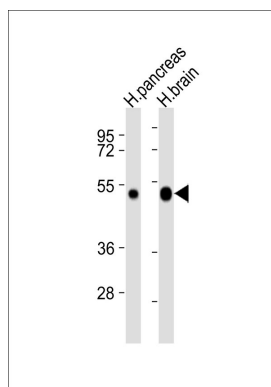
Background

Component of the epithelial apical junction complex that may function as an homophilic cell adhesion molecule and is essential for tight junction integrity. Also involved in transepithelial migration of leukocytes through adhesive interactions with AMICA1/JAML a transmembrane protein of the plasma membrane of leukocytes. The interaction between both receptors also mediates the activation of gamma-delta T cells, a subpopulation of T cells residing in epithelia and involved in tissue homeostasis and repair. Upon epithelial CXADR-binding, AMICA1 induces downstream cell signaling events in gamma-delta T cells through PI3-kinase and MAP kinases. It results in proliferation and production of cytokines and growth factors by T cells that in turn stimulate epithelial tissues repair.

References

Tomko R.P.,et al.Proc. Natl. Acad. Sci. U.S.A. 94:3352-3356(1997).
Bergelson J.M.,et al.Science 275:1320-1323(1997).
Bowles K.R.,et al.Hum. Genet. 105:354-359(1999).
He Y.,et al.Nat. Struct. Biol. 8:874-878(2001).
Doerner A.,et al.J. Biol. Chem. 279:18497-18503(2004).

Images



All lanes : Anti-CXADR Antibody at 1:1000 dilution Lane 1: human pancreas lysates Lane 2: human brain lysates Lysates/proteins at 20 µg per lane. Secondary Goat Anti-Rabbit IgG, (H+L), Peroxidase conjugated at 1/10000 dilution Predicted band size : 40 kDa Blocking/Dilution buffer: 5% NFDM/TBST.

Please note: All products are 'FOR RESEARCH USE ONLY. NOT FOR USE IN DIAGNOSTIC OR THERAPEUTIC PROCEDURES'.