

# MLF1 Antibody

Purified Rabbit Polyclonal Antibody (Pab)

Catalog # AP51795

## Product Information

Application	WB
Primary Accession	<a href="#">P58340</a>
Reactivity	Human, Mouse, Rat
Host	Rabbit
Clonality	Polyclonal
Calculated MW	30627

## Additional Information

Gene ID	4291
Other Names	Myeloid leukemia factor 1, Myelodysplasia-myeloid leukemia factor 1, MLF1
Target/Specificity	KLH-conjugated synthetic peptide encompassing a sequence within the center region of human MLF1. The exact sequence is proprietary.
Dilution	WB~~ 1:1000
Format	0.01M PBS, pH 7.2, 0.09% (W/V) Sodium azide, Glycerol 50%
Storage	Store at -20 °C.Stable for 12 months from date of receipt

## Protein Information

Name	MLF1
Function	Involved in lineage commitment of primary hemopoietic progenitors by restricting erythroid formation and enhancing myeloid formation. Interferes with erythropoietin-induced erythroid terminal differentiation by preventing cells from exiting the cell cycle through suppression of CDKN1B/p27Kip1 levels. Suppresses COP1 activity via CSN3 which activates p53 and induces cell cycle arrest. Binds DNA and affects the expression of a number of genes so may function as a transcription factor in the nucleus.
Cellular Location	Cytoplasm {ECO:0000250 UniProtKB:Q9QWV4}. Nucleus {ECO:0000250 UniProtKB:Q9QWV4}. Cell projection, cilium {ECO:0000250 UniProtKB:Q9QWV4}. Cytoplasm, cytoskeleton, cilium basal body {ECO:0000250 UniProtKB:Q9QWV4}. Note=Shuttles between the cytoplasm and nucleus. {ECO:0000250 UniProtKB:Q9QWV4}
Tissue Location	Most abundant in testis, ovary, skeletal muscle, heart, kidney and colon. Low expression in spleen, thymus and peripheral blood leukocytes

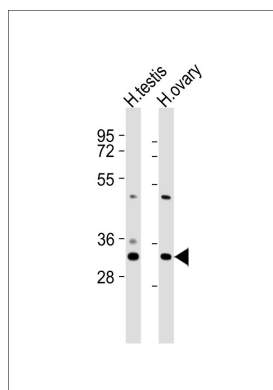
## Background

Involved in lineage commitment of primary hemopoietic progenitors by restricting erythroid formation and enhancing myeloid formation. Interferes with erythropoietin-induced erythroid terminal differentiation by preventing cells from exiting the cell cycle through suppression of CDKN1B/p27Kip1 levels. Suppresses RFWD2/COP1 activity via CSN3 which activates p53 and induces cell cycle arrest. Binds DNA and affects the expression of a number of genes so may function as a transcription factor in the nucleus.

## References

Yoneda-Kato N.,et al.Oncogene 12:265-275(1996).  
Feng X.,et al.Submitted (DEC-2004) to the EMBL/GenBank/DDBJ databases.  
Ota T.,et al.Nat. Genet. 36:40-45(2004).  
Muzny D.M.,et al.Nature 440:1194-1198(2006).  
Mural R.J.,et al.Submitted (SEP-2005) to the EMBL/GenBank/DDBJ databases.

## Images



All lanes : Anti-MLF1 Antibody at 1:1000 dilution Lane 1: human testis lysates Lane 2: human ovary lysates  
Lysates/proteins at 20 µg per lane. Secondary Goat Anti-Rabbit IgG, (H+L), Peroxidase conjugated at 1/10000 dilution Predicted band size : 31 kDa Blocking/Dilution buffer: 5% NFDM/TBST.

Please note: All products are 'FOR RESEARCH USE ONLY. NOT FOR USE IN DIAGNOSTIC OR THERAPEUTIC PROCEDURES'.