

NXPH2 Antibody

Purified Rabbit Polyclonal Antibody (Pab)

Catalog # AP51806

Product Information

Application	WB
Primary Accession	O95156
Reactivity	Human, Mouse, Rat
Host	Rabbit
Clonality	Polyclonal
Calculated MW	29938

Additional Information

Gene ID	11249
Other Names	Neurexophilin-2, NXPH2, NPH2
Target/Specificity	KLH conjugated synthetic peptide derived from human NXPH2
Dilution	WB~~ 1:500
Format	0.01M PBS, pH 7.2, 0.09% (W/V) Sodium azide, Glycerol 50%
Storage	Store at -20 °C.Stable for 12 months from date of receipt

Protein Information

Name	NXPH2
Synonyms	NPH2
Function	May be signaling molecules that resemble neuropeptides and that act by binding to alpha-neurexins and possibly other receptors.
Cellular Location	Secreted.
Tissue Location	Expressed in brain and kidney.

Background

May be signaling molecules that resemble neuropeptides and that act by binding to alpha-neurexins and possibly other receptors (Potential).

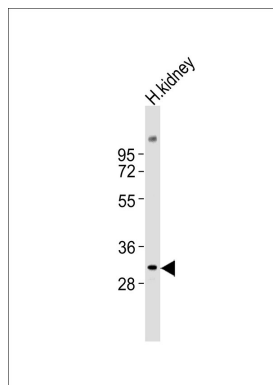
References

Kawasaki A.,et al.Submitted (FEB-2004) to the EMBL/GenBank/DDBJ databases.

Hillier L.W.,et al.Nature 434:724-731(2005).

Missler M.,et al.J. Neurosci. 18:3630-3638(1998).

Images



Anti-NXPH2 Antibody at 1:500 dilution + human kidney lysates. Lysates/proteins at 20 µg per lane. Secondary Goat Anti-Rabbit IgG, (H+L), Peroxidase conjugated at 1/10000 dilution. Predicted band size : 30 kDa. Blocking/Dilution buffer: 5% NFDM/TBST.

Please note: All products are 'FOR RESEARCH USE ONLY. NOT FOR USE IN DIAGNOSTIC OR THERAPEUTIC PROCEDURES'.