

# Neurocan Antibody

Purified Rabbit Polyclonal Antibody (Pab)

Catalog # AP51807

## Product Information

---

<b>Application</b>	WB
<b>Primary Accession</b>	<a href="#">O14594</a>
<b>Reactivity</b>	Human, Mouse, Rat
<b>Host</b>	Rabbit
<b>Clonality</b>	Polyclonal
<b>Calculated MW</b>	143093

## Additional Information

---

<b>Gene ID</b>	1463
<b>Other Names</b>	Neurocan core protein, Chondroitin sulfate proteoglycan 3, NCAN, CSPG3, NEUR
<b>Target/Specificity</b>	KLH conjugated synthetic peptide derived from human Neurocan
<b>Dilution</b>	WB~~ 1:1000
<b>Format</b>	0.01M PBS, pH 7.2, 0.09% (W/V) Sodium azide, Glycerol 50%
<b>Storage</b>	Store at -20 °C.Stable for 12 months from date of receipt

## Protein Information

---

<b>Name</b>	NCAN
<b>Synonyms</b>	CSPG3, NEUR
<b>Function</b>	May modulate neuronal adhesion and neurite growth during development by binding to neural cell adhesion molecules (NG-CAM and N- CAM). Chondroitin sulfate proteoglycan; binds to hyaluronic acid.
<b>Cellular Location</b>	Secreted.
<b>Tissue Location</b>	Detected in cerebrospinal fluid (at protein level) (PubMed:25326458). Brain.

## Background

---

May modulate neuronal adhesion and neurite growth during development by binding to neural cell adhesion molecules (NG-CAM and N-CAM). Chondroitin sulfate proteoglycan; binds to hyaluronic acid.

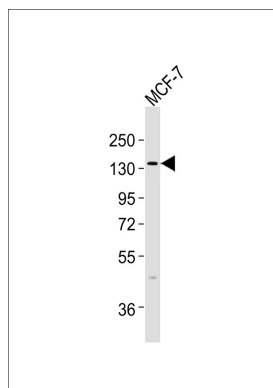
## References

---

Prange C.K.,et al.Gene 221:199-205(1998).  
Grimwood J.,et al.Nature 428:529-535(2004).  
Halim A.,et al.J. Proteome Res. 12:573-584(2013).

## Images

---



Anti-Neurocan Antibody at 1:1000 dilution + MCF-7 whole cell lysates. Lysates/proteins at 20 µg per lane. Secondary Goat Anti-Rabbit IgG, (H+L), Peroxidase conjugated at 1/10000 dilution. Predicted band size : 143 kDa. Blocking/Dilution buffer: 5% NFDm/TBST.

Please note: All products are 'FOR RESEARCH USE ONLY. NOT FOR USE IN DIAGNOSTIC OR THERAPEUTIC PROCEDURES'.