

CIP29 Antibody

Purified Rabbit Polyclonal Antibody (Pab)

Catalog # AP51810

Product Information

Application	WB
Primary Accession	P82979
Reactivity	Human, Mouse, Rat
Host	Rabbit
Clonality	Polyclonal
Calculated MW	23671

Additional Information

Gene ID	84324
Other Names	SAP domain-containing ribonucleoprotein, Cytokine-induced protein of 29 kDa, Nuclear protein Hcc-1, Proliferation-associated cytokine-inducible protein CIP29, SARNP, HCC1
Target/Specificity	KLH-conjugated synthetic peptide encompassing a sequence within the C-term region of human CIP29. The exact sequence is proprietary.
Dilution	WB~~ 1:1000
Format	0.01M PBS, pH 7.2, 0.09% (W/V) Sodium azide, Glycerol 50%
Storage	Store at -20 °C.Stable for 12 months from date of receipt

Protein Information

Name	SARNP
Synonyms	HCC1
Function	Binds both single-stranded and double-stranded DNA with higher affinity for the single-stranded form. Specifically binds to scaffold/matrix attachment region DNA. Also binds single-stranded RNA. Enhances RNA unwinding activity of DDX39A. May participate in important transcriptional or translational control of cell growth, metabolism and carcinogenesis. Component of the TREX complex which is thought to couple mRNA transcription, processing and nuclear export, and specifically associates with spliced mRNA and not with unspliced pre- mRNA (PubMed: 15338056 , PubMed: 17196963 , PubMed: 20844015). The TREX complex is recruited to spliced mRNAs by a transcription-independent mechanism, binds to mRNA upstream of the exon-junction complex (EJC) and is recruited in a splicing- and cap-dependent manner to a region near the 5' end of the mRNA where it functions in mRNA

export to the cytoplasm via the TAP/NXF1 pathway (PubMed:[15338056](#), PubMed:[17196963](#), PubMed:[20844015](#)). Associates with DDX39B, which facilitates RNA binding of DDX39B and likely plays a role in mRNA export (PubMed:[37578863](#)).

Cellular Location

Nucleus. Nucleus speckle.

Tissue Location

Low expression in spleen, liver, pancreas, testis, thymus, heart, and kidney. Increased levels are seen in hepatocellular carcinoma and pancreatic adenocarcinoma.

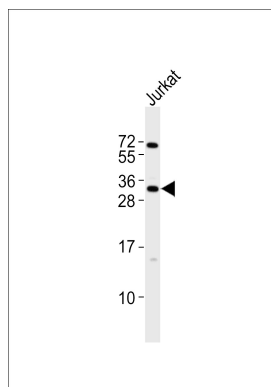
Background

Binds both single-stranded and double-stranded DNA with higher affinity for the single-stranded form. Specifically binds to scaffold/matrix attachment region DNA. Also binds single-stranded RNA. Enhances RNA unwinding activity of DDX39A. May participate in important transcriptional or translational control of cell growth, metabolism and carcinogenesis. Component of the TREX complex which is thought to couple mRNA transcription, processing and nuclear export, and specifically associates with spliced mRNA and not with unspliced pre-mRNA. TREX is recruited to spliced mRNAs by a transcription-independent mechanism, binds to mRNA upstream of the exon-junction complex (EJC) and is recruited in a splicing- and cap-dependent manner to a region near the 5' end of the mRNA where it functions in mRNA export to the cytoplasm via the TAP/NXF1 pathway. The TREX complex is essential for the export of Kaposi's sarcoma-associated herpesvirus (KSHV) intronless mRNAs and infectious virus production.

References

Choong M.L.,et al.FEBS Lett. 496:109-116(2001).
Fukuda S.,et al.Biochem. Biophys. Res. Commun. 292:593-600(2002).
Zhang Q.-H.,et al.Genome Res. 10:1546-1560(2000).
Ota T.,et al.Nat. Genet. 36:40-45(2004).
Mural R.J.,et al.Submitted (JUL-2005) to the EMBL/GenBank/DDBJ databases.

Images



Anti-CIP29 Antibody at 1:1000 dilution + Jurkat whole cell lysates. Lysates/proteins at 20 µg per lane. Secondary Goat Anti-Rabbit IgG, (H+L), Peroxidase conjugated at 1/10000 dilution. Predicted band size : 24 kDa. Blocking/Dilution buffer: 5% NFDM/TBST.

Please note: All products are 'FOR RESEARCH USE ONLY. NOT FOR USE IN DIAGNOSTIC OR THERAPEUTIC PROCEDURES'.