

CAPRI Antibody

Purified Rabbit Polyclonal Antibody (Pab)

Catalog # AP51836

Product Information

Application	WB
Primary Accession	O43374
Reactivity	Human, Mouse, Rat
Host	Rabbit
Clonality	Polyclonal
Calculated MW	90458

Additional Information

Gene ID	10156
Other Names	Ras GTPase-activating protein 4, Calcium-promoted Ras inactivator, Ras p21 protein activator 4, RasGAP-activating-like protein 2, RASA4, CAPRI, GAPL, KIAA0538
Target/Specificity	KLH conjugated synthetic peptide derived from human CAPRI
Dilution	WB~~ 1:1000
Format	0.01M PBS, pH 7.2, 0.09% (W/V) Sodium azide, Glycerol 50%
Storage	Store at -20 °C.Stable for 12 months from date of receipt

Protein Information

Name	RASA4
Synonyms	CAPRI, GAPL, KIAA0538
Function	Ca(2+)-dependent Ras GTPase-activating protein, that switches off the Ras-MAPK pathway following a stimulus that elevates intracellular calcium. Functions as an adaptor for Cdc42 and Rac1 during FcR-mediated phagocytosis.
Cellular Location	Cytoplasm, cytosol. Cell membrane; Peripheral membrane protein. Note=Localized to the cytosol as a result of its lack of phosphoinositide binding activity. Upon agonist-stimulated calcium mobilization, utilizes the C2A and C2B domains to associate with the plasma membrane
Tissue Location	Widely expressed..

Background

Ca(2+)-dependent Ras GTPase-activating protein, that switches off the Ras-MAPK pathway following a stimulus that elevates intracellular calcium. Functions as an adaptor for Cdc42 and Rac1 during FcR-mediated phagocytosis.

References

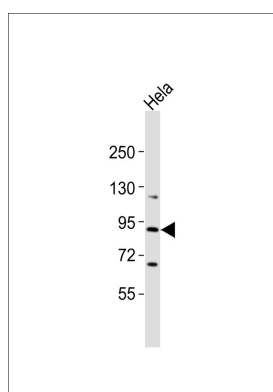
Lockyer P.J.,et al.Curr. Biol. 11:981-986(2001).

Nagase T.,et al.DNA Res. 5:31-39(1998).

Ota T.,et al.Nat. Genet. 36:40-45(2004).

Hillier L.W.,et al.Nature 424:157-164(2003).

Images



Anti-CAPRI Antibody at 1:1000 dilution + HeLa whole cell lysates. Lysates/proteins at 20 µg per lane. Secondary Goat Anti-Rabbit IgG, (H+L), Peroxidase conjugated at 1/10000 dilution. Predicted band size : 90 kDa. Blocking/Dilution buffer: 5% NFDM/TBST.

Please note: All products are 'FOR RESEARCH USE ONLY. NOT FOR USE IN DIAGNOSTIC OR THERAPEUTIC PROCEDURES'.