

PPP2R1B Antibody

Purified Rabbit Polyclonal Antibody (Pab)

Catalog # AP51856

Product Information

Application	WB
Primary Accession	P30154
Reactivity	Human, Mouse, Rat
Host	Rabbit
Clonality	Polyclonal
Calculated MW	66214

Additional Information

Gene ID	5519
Other Names	Serine/threonine-protein phosphatase 2A 65 kDa regulatory subunit A beta isoform, PP2A subunit A isoform PR65-beta, PP2A subunit A isoform R1-beta, PPP2R1B
Target/Specificity	KLH conjugated synthetic peptide derived from human PPP2R1B
Dilution	WB~~ 1:1000
Format	0.01M PBS, pH 7.2, 0.09% (W/V) Sodium azide, Glycerol 50%
Storage	Store at -20 °C.Stable for 12 months from date of receipt

Protein Information

Name	PPP2R1B
Function	The PR65 subunit of protein phosphatase 2A serves as a scaffolding molecule to coordinate the assembly of the catalytic subunit and a variable regulatory B subunit.

Background

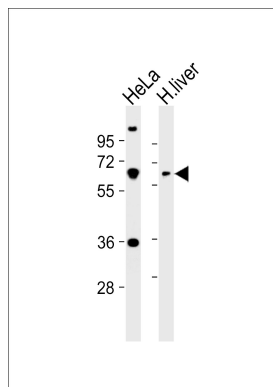
The PR65 subunit of protein phosphatase 2A serves as a scaffolding molecule to coordinate the assembly of the catalytic subunit and a variable regulatory B subunit.

References

Baysal B.E.,et al.Gene 217:107-116(1998).

Wang S.S.,et al.Science 282:284-287(1998).
Baysal B.E.,et al.Eur. J. Hum. Genet. 9:121-129(2001).
Ota T.,et al.Nat. Genet. 36:40-45(2004).
Taylor T.D.,et al.Nature 440:497-500(2006).

Images



All lanes : Anti-PPP2R1B Antibody at 1:1000 dilution Lane 1: HeLa whole cell lysates Lane 2: human liver lysates Lysates/proteins at 20 µg per lane. Secondary Goat Anti-Rabbit IgG, (H+L), Peroxidase conjugated at 1/10000 dilution Predicted band size : 66 kDa Blocking/Dilution buffer: 5% NFDM/TBST.

Please note: All products are 'FOR RESEARCH USE ONLY. NOT FOR USE IN DIAGNOSTIC OR THERAPEUTIC PROCEDURES'.