

NCKX2 Antibody

Purified Rabbit Polyclonal Antibody (Pab)

Catalog # AP51866

Product Information

| | |
|-------------------|------------------------|
| Application | WB |
| Primary Accession | Q9UI40 |
| Reactivity | Human, Mouse, Rat |
| Host | Rabbit |
| Clonality | Polyclonal |
| Calculated MW | 73664 |

Additional Information

| | |
|--------------------|---|
| Gene ID | 25769 |
| Other Names | Sodium/potassium/calcium exchanger 2, Na(+)/K(+)/Ca(2+)-exchange protein 2, Retinal cone Na-Ca+K exchanger, Solute carrier family 24 member 2, SLC24A2, NCKX2 |
| Target/Specificity | KLH conjugated synthetic peptide derived from human NCKX2 |
| Dilution | WB~~ 1:1000 |
| Format | 0.01M PBS, pH 7.2, 0.09% (W/V) Sodium azide, Glycerol 50% |
| Storage | Store at -20 °C.Stable for 12 months from date of receipt |

Protein Information

| | |
|-------------------|---|
| Name | SLC24A2 |
| Synonyms | NCKX2 {ECO:0000303 PubMed:10662833} |
| Function | Calcium, potassium:sodium antiporter that transports 1 Ca(2+) and 1 K(+) in exchange for 4 Na(+) (PubMed: 10662833 , PubMed: 26631410). Required for learning and memory by regulating neuronal Ca(2+), which is essential for the development of synaptic plasticity (By similarity). |
| Cellular Location | Cell membrane; Multi-pass membrane protein |

Background

Critical component of the visual transduction cascade, controlling the calcium concentration of outer segments during light and darkness. Light causes a rapid lowering of cytosolic free calcium in the outer

segment of both retinal rod and cone photoreceptors and the light-induced lowering of calcium is caused by extrusion via this protein which plays a key role in the process of light adaptation. Transports 1 Ca^{2+} and 1 K^{+} in exchange for 4 Na^{+} .

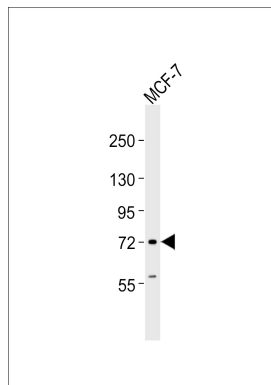
References

Prinsen C.F.M., et al. J. Neurosci. 20:1424-1434(2000).

Humphray S.J., et al. Nature 429:369-374(2004).

Kinjo T.G., et al. Biochemistry 42:2485-2491(2003).

Images



Anti-NCKX2 Antibody at 1:1000 dilution + MCF-7 whole cell lysates. Lysates/proteins at 20 μg per lane. Secondary Goat Anti-Rabbit IgG, (H+L), Peroxidase conjugated at 1/10000 dilution. Predicted band size : 74 kDa. Blocking/Dilution buffer: 5% NFDM/TBST.

Please note: All products are 'FOR RESEARCH USE ONLY. NOT FOR USE IN DIAGNOSTIC OR THERAPEUTIC PROCEDURES'.