

# GPR15 Antibody

Purified Rabbit Polyclonal Antibody (Pab)

Catalog # AP51956

## Product Information

---

Application	WB
Primary Accession	<a href="#">P49685</a>
Reactivity	Human, Mouse, Rat
Host	Rabbit
Clonality	Polyclonal
Calculated MW	40787

## Additional Information

---

Gene ID	2838
Other Names	G-protein coupled receptor 15, Brother of Bonzo, BoB, GPR15
Target/Specificity	KLH conjugated synthetic peptide derived from human GPR15
Dilution	WB~~ 1:1000
Format	0.01M PBS, pH 7.2, 0.09% (W/V) Sodium azide, Glycerol 50%
Storage	Store at -20 °C.Stable for 12 months from date of receipt

## Protein Information

---

Name	GPR15
Function	<p>G protein-coupled receptor that plays an important role in immune homeostasis (PubMed:<a href="#">33758080</a>, PubMed:<a href="#">38918398</a>). Acts via its natural ligand GPR15LG, a chemokine-like polypeptide strongly expressed in gastrointestinal tissues. GPR15-GPR15LG signaling axis regulates intestinal homeostasis and inflammation through the migration of immune cells (PubMed:<a href="#">33758080</a>, PubMed:<a href="#">38918398</a>). Controls thereby the specific homing of T-cells, particularly FOXP3+ regulatory T-cells (Tregs), to the large intestine lamina propria (By similarity). Also required for skin localization of thymus-derived dendritic epidermal T-cells (By similarity). Plays an important role in mediating cytoprotective function as well as angiogenesis of thrombomodulin (By similarity). Mechanistically, preferentially signals through the Gi/o pathway to inhibit adenylate cyclase activity and activate a phosphatidylinositol- calcium second messenger system that regulates the release of Ca(2+) ions from intracellular stores (PubMed:<a href="#">35510660</a>).</p>
Cellular Location	Cell membrane; Multi-pass membrane protein

**Tissue Location**

Highly expressed in lymphoid tissues, including macrophages and peripheral blood mononuclear cells

**Background**

---

Probable chemokine receptor. Alternative coreceptor with CD4 for HIV-1 infection.

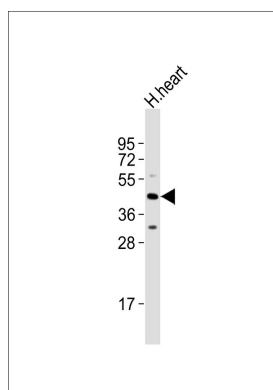
**References**

---

Heiber M., et al. Genomics 32:462-465(1996).

**Images**

---



Anti-GPR15 Antibody at 1:1000 dilution + human heart lysates. Lysates/proteins at 20 µg per lane. Secondary Goat Anti-Rabbit IgG, (H+L), Peroxidase conjugated at 1/10000 dilution. Predicted band size : 41 kDa. Blocking/Dilution buffer: 5% NFDm/TBST.

Please note: All products are 'FOR RESEARCH USE ONLY. NOT FOR USE IN DIAGNOSTIC OR THERAPEUTIC PROCEDURES'.