

EB3 Antibody

Purified Rabbit Polyclonal Antibody (Pab)

Catalog # AP52003

Product Information

Application	WB
Primary Accession	Q9UPY8
Reactivity	Human, Mouse, Rat
Host	Rabbit
Clonality	Polyclonal
Calculated MW	31982

Additional Information

Gene ID	22924
Other Names	Microtubule-associated protein RP/EB family member 3, EB1 protein family member 3, EBF3, End-binding protein 3, EB3, RP3, MAPRE3
Target/Specificity	KLH-conjugated synthetic peptide encompassing a sequence within the C-term region of human EB3. The exact sequence is proprietary.
Dilution	WB~~ 1:8000
Format	0.01M PBS, pH 7.2, 0.09% (W/V) Sodium azide, Glycerol 50%
Storage	Store at -20 °C.Stable for 12 months from date of receipt

Protein Information

Name	MAPRE3
Function	Plus-end tracking protein (+TIP) that binds to the plus-end of microtubules and regulates the dynamics of the microtubule cytoskeleton (PubMed: 19255245 , PubMed: 28814570). Promotes microtubule growth (PubMed: 19255245 , PubMed: 28814570). May be involved in spindle function by stabilizing microtubules and anchoring them at centrosomes (PubMed: 19255245 , PubMed: 28814570). Also acts as a regulator of minus-end microtubule organization: interacts with the complex formed by AKAP9 and PDE4DIP, leading to recruit CAMSAP2 to the Golgi apparatus, thereby tethering non-centrosomal minus-end microtubules to the Golgi, an important step for polarized cell movement (PubMed: 28814570). Promotes elongation of CAMSAP2-decorated microtubule stretches on the minus-end of microtubules (PubMed: 28814570).
Cellular Location	Cytoplasm, cytoskeleton. Note=Associated with the microtubule network. Detected at the plus end of microtubules

Tissue Location

Predominantly expressed in brain and muscle.

Background

Binds to the plus end of microtubules and regulates the dynamics of the microtubule cytoskeleton. Promotes microtubule growth. May be involved in spindle function by stabilizing microtubules and anchoring them at centrosomes. May play a role in cell migration (By similarity).

References

Nakagawa H.,et al.Oncogene 19:210-216(2000).

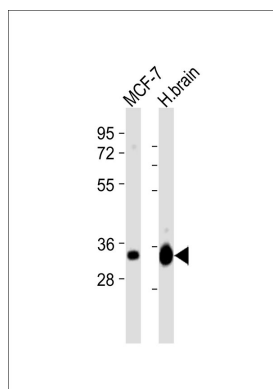
Su L.-K.,et al.Genomics 71:142-149(2001).

Halleck A.,et al.Submitted (JUN-2004) to the EMBL/GenBank/DDBJ databases.

Hillier L.W.,et al.Nature 434:724-731(2005).

Mural R.J.,et al.Submitted (SEP-2005) to the EMBL/GenBank/DDBJ databases.

Images



All lanes : Anti-EB3 Antibody at 1:8000 dilution Lane 1: MCF-7 whole cell lysates Lane 2: human brain lysates Lysates/proteins at 20 µg per lane. Secondary Goat Anti-Rabbit IgG, (H+L), Peroxidase conjugated at 1/10000 dilution Predicted band size : 32 kDa Blocking/Dilution buffer: 5% NFDM/TBST.

Please note: All products are 'FOR RESEARCH USE ONLY. NOT FOR USE IN DIAGNOSTIC OR THERAPEUTIC PROCEDURES'.