

## CQ028 Antibody (C-term)

Affinity Purified Rabbit Polyclonal Antibody (Pab)

Catalog # AP5208b

### Product Information

---

<b>Application</b>	WB, E
<b>Primary Accession</b>	<a href="#">Q8IV36</a>
<b>Other Accession</b>	<a href="#">Q8R1F6</a>
<b>Reactivity</b>	Human
<b>Predicted</b>	Mouse
<b>Host</b>	Rabbit
<b>Clonality</b>	Polyclonal
<b>Isotype</b>	Rabbit IgG
<b>Clone Names</b>	RB26356
<b>Calculated MW</b>	88745
<b>Antigen Region</b>	567-595

### Additional Information

---

<b>Gene ID</b>	283987
<b>Other Names</b>	Protein HID1, Down-regulated in multiple cancers 1, HID1 domain-containing protein, Protein hid-1 homolog, HID1, C17orf28, DMC1
<b>Target/Specificity</b>	This CQ028 antibody is generated from rabbits immunized with a KLH conjugated synthetic peptide between 567-595 amino acids from the C-terminal region of human CQ028.
<b>Dilution</b>	WB~~1:1000 E~~Use at an assay dependent concentration.
<b>Format</b>	Purified polyclonal antibody supplied in PBS with 0.09% (W/V) sodium azide. This antibody is purified through a protein A column, followed by peptide affinity purification.
<b>Storage</b>	Maintain refrigerated at 2-8°C for up to 2 weeks. For long term storage store at -20°C in small aliquots to prevent freeze-thaw cycles.
<b>Precautions</b>	CQ028 Antibody (C-term) is for research use only and not for use in diagnostic or therapeutic procedures.

### Protein Information

---

<b>Name</b>	HID1
<b>Synonyms</b>	C17orf28, DMC1

<b>Function</b>	May play an important role in the development of cancers in a broad range of tissues.
<b>Cellular Location</b>	Cytoplasm. Golgi apparatus membrane; Lipid-anchor. Note=Shuttles between the cytosol and the Golgi apparatus
<b>Tissue Location</b>	Expressed in heart, skeletal muscle, colon, spleen, kidney, liver, small intestine and lung. Highest expression is seen in brain and placenta. Loss of expression is seen in some breast, cervical, hepatocellular, lung, thyroid, gastric and renal cell-cancer lines. Highly expressed in secretory cell lines. Expressed in almost all regions of the brain, in cerebellum, anterior frontal cortex, and striatum.

## Background

---

CQ028 may play an important role in the development of cancers in a broad range of tissues.

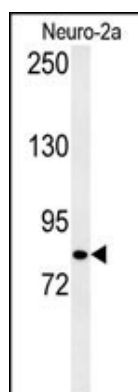
## References

---

Harada, H., et al. J. Hum. Genet. 46(2):90-95(2001) Masson, J.Y., et al. EMBO J. 18(22):6552-6560(1999)

## Images

---



Western blot analysis of CQ028 Antibody (C-term) (Cat. #AP5208b) in Neuro-2a cell line lysates (35ug/lane).CQ028 (arrow) was detected using the purified Pab.

Please note: All products are 'FOR RESEARCH USE ONLY. NOT FOR USE IN DIAGNOSTIC OR THERAPEUTIC PROCEDURES'.