

CT054 Antibody (Center)

Affinity Purified Rabbit Polyclonal Antibody (Pab)

Catalog # AP5210c

Product Information

Application	WB, FC, E
Primary Accession	Q9NQ40
Reactivity	Human
Host	Rabbit
Clonality	Polyclonal
Isotype	Rabbit IgG
Clone Names	RB26485
Calculated MW	50805
Antigen Region	164-193

Additional Information

Gene ID	113278
Other Names	Solute carrier family 52, riboflavin transporter, member 3, Riboflavin transporter 2, hRFT2, SLC52A3, C20orf54, RFT2, RFVT3
Target/Specificity	This CT054 antibody is generated from rabbits immunized with a KLH conjugated synthetic peptide between 164-193 amino acids from the Central region of human CT054.
Dilution	WB~~1:1000 FC~~1:10~50 E~~Use at an assay dependent concentration.
Format	Purified polyclonal antibody supplied in PBS with 0.09% (W/V) sodium azide. This antibody is purified through a protein A column, followed by peptide affinity purification.
Storage	Maintain refrigerated at 2-8°C for up to 2 weeks. For long term storage store at -20°C in small aliquots to prevent freeze-thaw cycles.
Precautions	CT054 Antibody (Center) is for research use only and not for use in diagnostic or therapeutic procedures.

Protein Information

Name	SLC52A3
Synonyms	C20orf54, RFT2, RFVT3
Function	Plasma membrane transporter mediating the uptake by cells of the water soluble vitamin B2/riboflavin that plays a key role in biochemical

oxidation-reduction reactions of the carbohydrate, lipid, and amino acid metabolism (PubMed:[20463145](#), PubMed:[22273710](#), PubMed:[24264046](#), PubMed:[27702554](#)). Humans are unable to synthesize vitamin B2/riboflavin and must obtain it via intestinal absorption (PubMed:[20463145](#)).

Cellular Location

Apical cell membrane; Multi-pass membrane protein. Cell membrane [Isoform 2]; Cytoplasm

Tissue Location

Predominantly expressed in testis. Highly expressed in small intestine and prostate.

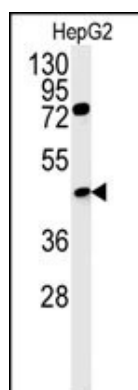
Background

The function of this protein has not been specifically defined.

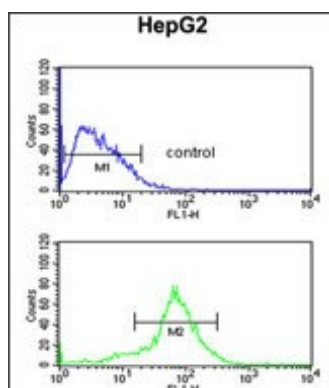
References

Green, P., et al. Am. J. Hum. Genet. 86(3):485-489(2010)
Yamamoto, S., et al. J. Biochem. 145(4):437-443(2009)
Deloukas, P., et al. Nature 414(6866):865-871(2001)

Images



Western blot analysis of CT054 Antibody (Center) (Cat. #AP5210c) in HepG2 cell line lysates (35ug/lane).CT054 (arrow) was detected using the purified Pab.



CT054 Antibody (Center) (Cat. #AP5210c) flow cytometric analysis of HepG2 cells (bottom histogram) compared to a negative control cell (top histogram).FITC-conjugated goat-anti-rabbit secondary antibodies were used for the analysis.

Citations

- [SLC52A3 expression is activated by NF-κB p65/Rel-B and serves as a prognostic biomarker in esophageal cancer.](#)

Please note: All products are 'FOR RESEARCH USE ONLY. NOT FOR USE IN DIAGNOSTIC OR THERAPEUTIC PROCEDURES'.