

## CU056 Antibody (C-term)

Affinity Purified Rabbit Polyclonal Antibody (Pab)

Catalog # AP5211b

### Product Information

---

<b>Application</b>	WB, E
<b>Primary Accession</b>	<a href="#">Q9H0A9</a>
<b>Reactivity</b>	Human
<b>Host</b>	Rabbit
<b>Clonality</b>	Polyclonal
<b>Isotype</b>	Rabbit IgG
<b>Clone Names</b>	RB26071
<b>Calculated MW</b>	37613
<b>Antigen Region</b>	226-254

### Additional Information

---

<b>Gene ID</b>	84221
<b>Other Names</b>	Speriolin-like protein, Spermatogenesis and centriole-associated protein 1-like protein, SPATC1L, C21orf56
<b>Target/Specificity</b>	This CU056 antibody is generated from rabbits immunized with a KLH conjugated synthetic peptide between 226-254 amino acids from the C-terminal region of human CU056.
<b>Dilution</b>	WB~~1:1000 E~~Use at an assay dependent concentration.
<b>Format</b>	Purified polyclonal antibody supplied in PBS with 0.09% (W/V) sodium azide. This antibody is purified through a protein A column, followed by peptide affinity purification.
<b>Storage</b>	Maintain refrigerated at 2-8°C for up to 2 weeks. For long term storage store at -20°C in small aliquots to prevent freeze-thaw cycles.
<b>Precautions</b>	CU056 Antibody (C-term) is for research use only and not for use in diagnostic or therapeutic procedures.

### Protein Information

---

<b>Name</b>	SPATC1L
<b>Synonyms</b>	C21orf56
<b>Cellular Location</b>	Cytoplasm.

## Background

---

The function of this protein has not been specifically defined.

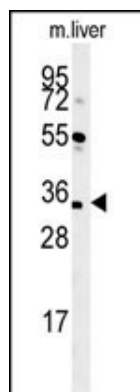
## References

---

Lehner, B., et al. Genome Res. 14(7):1315-1323(2004)

## Images

---



Western blot analysis of CU056 Antibody (C-term) (Cat. #AP5211b) in mouse liver tissue lysates (35ug/lane).CU056 (arrow) was detected using the purified Pab.

Please note: All products are 'FOR RESEARCH USE ONLY. NOT FOR USE IN DIAGNOSTIC OR THERAPEUTIC PROCEDURES'.