

Rabbit Anti-ICAM1 Polyclonal Antibody

Purified Rabbit Polyclonal Antibody (Pab)

Catalog # AP52125

Product Information

| | |
|---|--|
| Application | WB, IHC-P, IHC-F, IF, ICC, E |
| Primary Accession | P13597 |
| Reactivity | Mouse, Rat |
| Host | Rabbit |
| Clonality | Polyclonal |
| Calculated MW | 58844 |
| Physical State | Liquid |
| Immunogen | KLH conjugated synthetic peptide derived from human CD54 |
| Epitope Specificity | 201-300/537 |
| Isotype | IgG |
| Purity | affinity purified by Protein A |
| Buffer | 0.01M TBS (pH7.4) with 1% BSA, 0.02% Proclin300 and 50% Glycerol. |
| SUBCELLULAR LOCATION | Membrane; Single-pass type I membrane protein. |
| SIMILARITY | Belongs to the immunoglobulin superfamily. ICAM family. contains 5 Ig-like C2-type (immunoglobulin-like) domains. |
| SUBUNIT | Homodimer (Probable). Interacts with human herpesvirus 8 MIR2 protein (Probable). Interacts with MUC1 and promotes cell aggregation in epithelial cells. Interacts with ARHGEF26/SGEF. Binds to coxsackievirus A21 capsid proteins and acts as a receptor for this virus. |
| Post-translational modifications | Monoubiquitinated, which is promoted by MARCH9 and leads to endocytosis. |
| Important Note | This product as supplied is intended for research use only, not for use in human, therapeutic or diagnostic applications. |
| Background Descriptions | This gene encodes a cell surface glycoprotein which is typically expressed on endothelial cells and cells of the immune system. It binds to integrins of type CD11a / CD18, or CD11b / CD18 and is also exploited by Rhinovirus as a receptor. [provided by RefSeq, Jul 2008]. |

Additional Information

| | |
|--------------------|---|
| Gene ID | 15894 |
| Other Names | CD54; Ly-47; Icam-1; MALA-2; Intercellular adhesion molecule 1; MyD1; Icam1 |
| Dilution | WB=1:500-2000,IHC-P=1:100-500,IHC-F=1:100-500,ICC=1:100-500,IF=1:100-500,Flow-Cyt=1 µg/Test,ELISA=1:5000-10000 |
| Format | 0.01M TBS(pH7.4) with 1% BSA, 0.09% (W/V) sodium azide and 50% Glyce |
| Storage | Store at -20 °C for one year. Avoid repeated freeze/thaw cycles. When reconstituted in sterile pH 7.4 0.01M PBS or diluent of antibody the antibody |

is stable for at least two weeks at 2-4 °C.

Protein Information

| | |
|--------------------------|--|
| Name | Icam1 |
| Synonyms | Icam-1 |
| Function | ICAM proteins are ligands for the leukocyte adhesion protein LFA-1 (integrin alpha-L/beta-2). During leukocyte trans-endothelial migration, ICAM1 engagement promotes the assembly of endothelial apical cups through ARHGEF26/SGEF and RHOG activation (By similarity). |
| Cellular Location | Membrane; Single-pass type I membrane protein. |
| Tissue Location | Expressed at low level on a subpopulation of lymphocytes, macrophages, and endothelial cells, but is strongly induced on these cells, and on fibroblasts and epithelial cells |

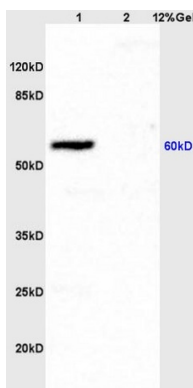
Background

ICAM proteins are ligands for the leukocyte adhesion protein LFA-1 (integrin alpha-L/beta-2). During leukocyte trans- endothelial migration, ICAM1 engagement promotes the assembly of endothelial apical cups through ARHGEF26/SGEF and RHOG activation (By similarity).

References

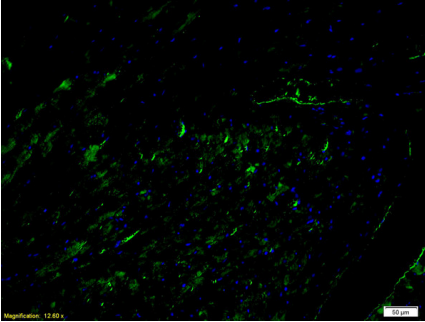
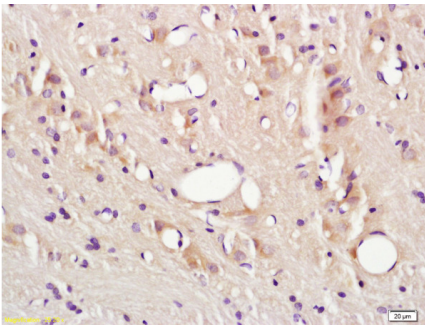
Horley K.J.,et al.EMBO J. 8:2889-2896(1989).
Takei F.,et al.Submitted (APR-1990) to the EMBL/GenBank/DDBJ databases.
Siu G.,et al.J. Immunol. 143:3813-3820(1989).
Ballantyne C.M.,et al.Nucleic Acids Res. 17:5853-5853(1989).
Ballantyne C.M.,et al.Genomics 14:1076-1080(1992).

Images



Lane 1: rat brain lysates Lane 2: rat heart lysates probed with Anti CD54/ICAM-1 Polyclonal Antibody, Unconjugated (AP52125) at 1:200 in 4 °C. Followed by conjugation to secondary antibody at 1:3000 90min in 37 °C. Predicted band 60kD. Observed band size: 60kD.

Formalin-fixed and paraffin embedded rat brain tissue labeled with Anti-CD54/ICAM-1 Polyclonal Antibody (AP52125), Unconjugated at 1:200, followed by conjugation to the secondary antibody and DAB staining



Formalin-fixed and paraffin embedded mouse heart tissue labeled with Anti-CD54/ICAM-1 Polyclonal Antibody (AP52125), Unconjugated at 1:200, followed by conjugation to the secondary antibody Goat Anti-Rabbit IgG, FITC conjugated(bs-0295G-FITC)used at 1:200 dilution for 40 minutes at 37°C and DAPI staining

Please note: All products are 'FOR RESEARCH USE ONLY. NOT FOR USE IN DIAGNOSTIC OR THERAPEUTIC PROCEDURES'.