

Rabbit Anti-CTGF Polyclonal Antibody

Purified Rabbit Polyclonal Antibody (Pab)

Catalog # AP52180

Product Information

Application	WB, E
Primary Accession	P29279
Reactivity	Human, Mouse, Rat
Host	Rabbit
Clonality	Polyclonal
Calculated MW	38091
Physical State	Liquid
Immunogen	KLH conjugated synthetic peptide derived from human CTGF
Epitope Specificity	221-349/349
Purity	affinity purified by Protein A
Buffer	0.01M TBS (pH7.4) with 1% BSA, 0.02% Proclin300 and 50% Glycerol.
SUBCELLULAR LOCATION	Secreted, extracellular space, extracellular matrix. Secreted.
SIMILARITY	Belongs to the CCN family. Contains 1 CTCK (C-terminal cystine knot-like) domain. Contains 1 IGFBP N-terminal domain. Contains 1 TSP type-1 domain. Contains 1 VWFC domain.
SUBUNIT	Monomer.
Important Note	This product as supplied is intended for research use only, not for use in human, therapeutic or diagnostic applications.
Background Descriptions	The protein encoded by this gene is a mitogen that is secreted by vascular endothelial cells. The encoded protein plays a role in chondrocyte proliferation and differentiation, cell adhesion in many cell types, and is related to platelet-derived growth factor. Certain polymorphisms in this gene have been linked with a higher incidence of systemic sclerosis. [provided by RefSeq, Nov 2009].

Additional Information

Gene ID	1490
Other Names	CCN2; NOV2; HCS24; IGFBP8; Connective tissue growth factor; CCN family member 2; Hypertrophic chondrocyte-specific protein 24; Insulin-like growth factor-binding protein 8; IBP-8; IGF-binding protein 8; IGFBP-8; CTGF
Target/Specificity	Expressed in bone marrow and thymic cells. Also expressed one of two Wilms tumors tested.
Dilution	WB=1:500-2000,ELISA=1:5000-10000
Format	0.01M TBS(pH7.4) with 1% BSA, 0.09% (W/V) sodium azide and 50% Glyce
Storage	Store at -20 °C for one year. Avoid repeated freeze/thaw cycles. When

reconstituted in sterile pH 7.4 0.01M PBS or diluent of antibody the antibody is stable for at least two weeks at 2-4 °C.

Protein Information

Name	CCN2 (HGNC:2500)
Function	Major connective tissue mitogen secreted by vascular endothelial cells. Promotes proliferation and differentiation of chondrocytes. Is involved in the stimulation of osteoblast differentiation and has a critical role in osteogenesis (PubMed: 39414788). Mediates heparin- and divalent cation-dependent cell adhesion in many cell types including fibroblasts, myofibroblasts, endothelial and epithelial cells. Enhances fibroblast growth factor- induced DNA synthesis.
Cellular Location	Secreted, extracellular space, extracellular matrix {ECO:0000250 UniProtKB:P29268}. Secreted
Tissue Location	Expressed in bone marrow and thymic cells. Also expressed one of two Wilms tumors tested.

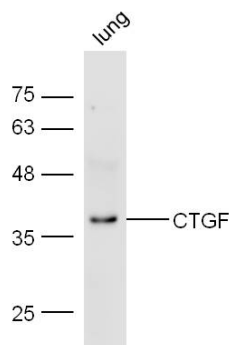
Background

Major connective tissue mitogen secreted by vascular endothelial cells. Promotes proliferation and differentiation of chondrocytes. Mediates heparin- and divalent cation-dependent cell adhesion in many cell types including fibroblasts, myofibroblasts, endothelial and epithelial cells. Enhances fibroblast growth factor-induced DNA synthesis.

References

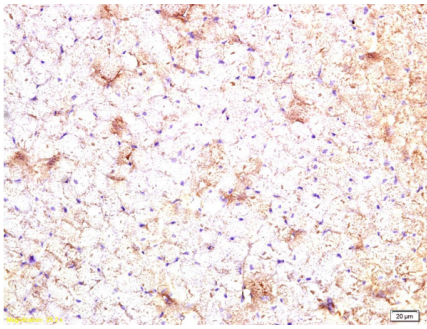
Bradham D.M.,et al.J. Cell Biol. 114:1285-1294(1991).
Igarashi A.,et al.J. Dermatol. 19:642-643(1992).
Oemar B.S.,et al.Circulation 95:831-839(1997).
Li Q.-H.,et al.Submitted (SEP-2003) to the EMBL/GenBank/DDBJ databases.
Dai W.-J.,et al.Submitted (FEB-2004) to the EMBL/GenBank/DDBJ databases.

Images

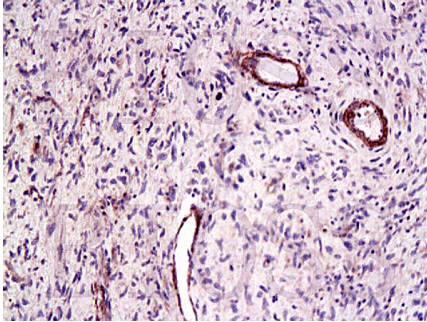


Mouse lung lysate probed with Anti-CTGF Polyclonal Antibody (AP52180) at 1:300 overnight in 4 °C. Followed by conjugation to the secondary antibody at 1:5000 90min in 37 °C.

Formalin-fixed and paraffin embedded rat heart tissue labeled Anti-CTGF Polyclonal Antibody, Unconjugated



(AP52180) at 1:200, followed by conjugation to the secondary antibody and DAB staining



Formalin-fixed and paraffin embedded human laryngeal cancer labeled Anti-CTGF Polyclonal Antibody, Unconjugated (AP52180) at 1:200, followed by conjugation to the secondary antibody and DAB staining

Please note: All products are 'FOR RESEARCH USE ONLY. NOT FOR USE IN DIAGNOSTIC OR THERAPEUTIC PROCEDURES'.