

Rabbit Anti-Cyclin E Polyclonal Antibody

Purified Rabbit Polyclonal Antibody (Pab)

Catalog # AP52202

Product Information

Application	WB, IHC-P, IHC-F, IF, E
Primary Accession	P39949
Reactivity	Mouse, Rat
Host	Rabbit
Clonality	Polyclonal
Calculated MW	47482
Physical State	Liquid
Immunogen	KLH conjugated synthetic peptide derived from rat Cyclin E
Epitope Specificity	375-411/411
Isotype	IgG
Purity	affinity purified by Protein A
Buffer	0.01M TBS (pH7.4) with 1% BSA, 0.02% Proclin300 and 50% Glycerol.
SUBCELLULAR LOCATION	Nucleus.
SIMILARITY	Belongs to the cyclin family. Cyclin E subfamily.
SUBUNIT	Interacts with a member of the CDK2/CDK protein kinases to form a serine/threonine kinase holoenzyme complex. The cyclin subunit imparts substrate specificity to the complex. Found in a complex with CDK2, CABLES1 and CCNA1 (By similarity). Part of a complex consisting of UHRF2, CDK2 and CCNE1. Interacts directly with UHRF2; the interaction ubiquitinates CCNE1 and appears to occur independently of CCNE1 phosphorylation.
Post-translational modifications	Phosphorylation of Thr-395 by GSK3 and of Ser-399 by CDK2 accelerates degradation via the ubiquitin proteasome pathway. Phosphorylated upon DNA damage, probably by ATM or ATR.
Important Note	This product as supplied is intended for research use only, not for use in human, therapeutic or diagnostic applications.
Background Descriptions	Cyclin E is a regulatory subunit of Cdk2 and controls G1 / S transition during the mammalian cell cycle. Multiple isoforms of Cyclin E are only expressed in tumors but not in normal tissue, suggesting a post transcriptional regulation of Cyclin E. In vitro analyses indicated that these truncated variant isoforms of Cyclin E are able to phosphorylate histone H1. Alterations in the Cyclin E protein have been implicated as indicators of worse prognosis in various cancers.

Additional Information

Other Names	Ccne; CYCLE; G1/S-specific cyclin-E1; Ccne1
Target/Specificity	Highly expressed in testis and placenta. Low levels in bronchial epithelial cells.
Dilution	WB=1:500-2000,IHC-P=1:100-500,IHC-F=1:100-500,IF=1:100-500,Flow-Cyt=1 µg/Test,ELISA=1:5000-10000

Format	0.01M TBS(pH7.4) with 1% BSA, 0.09% (W/V) sodium azide and 50% Glyce
Storage	Store at -20 °C for one year. Avoid repeated freeze/thaw cycles. When reconstituted in sterile pH 7.4 0.01M PBS or diluent of antibody the antibody is stable for at least two weeks at 2-4 °C.

Protein Information

Name	Ccne1
Synonyms	Ccne
Function	Essential for the control of the cell cycle at the G1/S (start) transition.
Cellular Location	Nucleus {ECO:0000250 UniProtKB:P24864}.

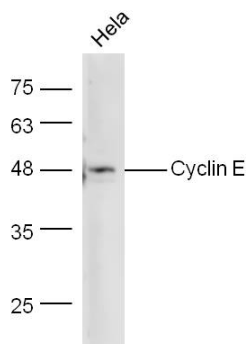
Background

Essential for the control of the cell cycle at the G1/S (start) transition.

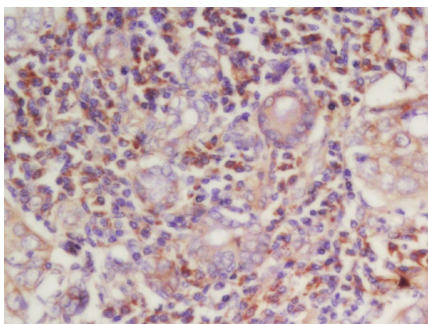
References

Tamura K.,et al.Oncogene 8:2113-2118(1993).
Hosokawa Y.,et al.Biochem. Mol. Biol. Int. 37:393-399(1995).

Images



HeLa cells lysate probed with Anti-Cyclin E Polyclonal Antibody (AP52202) at 1:300 overnight in 4 °C. Followed by conjugation to the secondary antibody at 1:5000 90min in 37 °C.



Formalin-fixed and paraffin embedded human laryngeal carcinoma labeled with Rabbit Anti-Cyclin E Polyclonal Antibody, Unconjugated (AP52202) at 1:200 followed by conjugation to the secondary antibody and DAB staining

Citations

- [Targeting the overexpressed CREB inhibits esophageal squamous cell carcinoma cell growth.](#)

Please note: All products are 'FOR RESEARCH USE ONLY. NOT FOR USE IN DIAGNOSTIC OR THERAPEUTIC PROCEDURES'.