

Rabbit Anti-MCL1 Polyclonal Antibody

Purified Rabbit Polyclonal Antibody (Pab)

Catalog # AP52249

Product Information

Application	WB, IF, IHC-P
Primary Accession	Q07820
Reactivity	Human, Mouse, Rat
Host	Rabbit
Clonality	Polyclonal
Calculated MW	37337

Additional Information

Gene ID	4170
Other Names	TM; EAT; MCL1L; MCL1S; Mcl-1; BCL2L3; MCL1-ES; bcl2-L-3; mcl1/EAT; Induced myeloid leukemia cell differentiation protein Mcl-1; Bcl-2-like protein 3; Bcl-2-related protein EAT/mcl1; MCL1
Dilution	WB~~1/100~1/500 IF~~1:50~200 IHC-P~~N/A
Format	0.01M TBS(pH7.4) with 1% BSA, 0.09% (W/V) sodium azide and 50% Glyce
Storage	Store at -20 °C for one year. Avoid repeated freeze/thaw cycles. When reconstituted in sterile pH 7.4 0.01M PBS or diluent of antibody the antibody is stable for at least two weeks at 2-4 °C.

Protein Information

Name	MCL1
Synonyms	BCL2L3
Function	Involved in the regulation of apoptosis versus cell survival, and in the maintenance of viability but not of proliferation. Mediates its effects by interactions with a number of other regulators of apoptosis. Isoform 1 inhibits apoptosis. Isoform 2 promotes apoptosis.
Cellular Location	Membrane; Single-pass membrane protein. Cytoplasm. Mitochondrion. Nucleus, nucleoplasm Note=Cytoplasmic, associated with mitochondria

Background

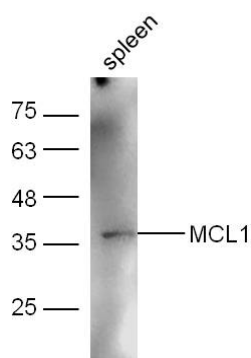
Involved in the regulation of apoptosis versus cell survival, and in the maintenance of viability but not of

proliferation. Mediates its effects by interactions with a number of other regulators of apoptosis. Isoform 1 inhibits apoptosis. Isoform 2 promotes apoptosis.

References

Kozopas K.M.,et al.Proc. Natl. Acad. Sci. U.S.A. 90:3516-3520(1993).
Umezawa A.,et al.Cell Struct. Funct. 21:143-150(1996).
Akgul C.,et al.Cell. Mol. Life Sci. 57:684-691(2000).
Bingle C.D.,et al.J. Biol. Chem. 275:22136-22146(2000).
Bae J.,et al.J. Biol. Chem. 275:25255-25261(2000).

Images



Mouse spleen lysates probed with Rabbit Anti-MCL1 Polyclonal Antibody, Unconjugated (AP52249) at 1:300 overnight at 4 °C. Followed by conjugation to secondary antibody at 1:5000 for 90 min at 37 °C.

Please note: All products are 'FOR RESEARCH USE ONLY. NOT FOR USE IN DIAGNOSTIC OR THERAPEUTIC PROCEDURES'.