

# Rabbit Anti-BAMBI Polyclonal Antibody

Purified Rabbit Polyclonal Antibody (Pab)

Catalog # AP52256

## Product Information

---

<b>Application</b>	WB, IHC-P, IHC-F, IF, ICC, E
<b>Primary Accession</b>	<a href="#">Q13145</a>
<b>Reactivity</b>	Human, Mouse, Rat, Pig
<b>Host</b>	Rabbit
<b>Clonality</b>	Polyclonal
<b>Calculated MW</b>	29108
<b>Physical State</b>	Liquid
<b>Immunogen</b>	KLH conjugated synthetic peptide derived from human BAMBI
<b>Epitope Specificity</b>	101-200/260
<b>Isotype</b>	IgG
<b>Purity</b>	affinity purified by Protein A
<b>Buffer</b>	0.01M TBS (pH7.4) with 1% BSA, 0.02% Proclin300 and 50% Glycerol.
<b>SUBCELLULAR LOCATION</b>	Membrane.
<b>SIMILARITY</b>	Belongs to the BAMBI family.
<b>Important Note</b>	This product as supplied is intended for research use only, not for use in human, therapeutic or diagnostic applications.
<b>Background Descriptions</b>	BAMBI is a membrane spanning glycoprotein that acts as a negative regulator of TGF- $\beta$ signaling during development. The BAMBI family of proteins are related to type I TGF- $\beta$ receptor family, however, BAMBI is a pseudoreceptor that lacks an intracellular serine/threonine kinase domain. BAMBI transcription regulation is under the influence of $\beta$ -catenin, BMP, smad3 and smad4. BAMBI expression can increase in colorectal and hepatocellular carcinomas relative to non-cancerous tissues. BAMBI is expressed at high levels during odontogenesis. BAMBI is coexpressed with Bmp-4 during early Xenopus embryogenesis and can be detected in poorly metastatic human melanoma cell lines.

## Additional Information

---

<b>Gene ID</b>	25805
<b>Other Names</b>	NMA; BMP and activin membrane-bound inhibitor homolog; Non-metastatic gene A protein; Putative transmembrane protein NMA; BAMBI
<b>Target/Specificity</b>	High expression in kidney medulla, placenta and spleen; low in kidney cortex, liver, prostate and gut. Not expressed in normal skin, expression is high in melanocytes and in 3 out of 11 melanoma metastases tested.
<b>Dilution</b>	WB=1:500-2000,IHC-P=1:100-500,IHC-F=1:100-500,ICC=1:100-500,IF=1:100-500,ELISA=1:5000-10000

<b>Format</b>	0.01M TBS(pH7.4) with 1% BSA, 0.09% (W/V) sodium azide and 50% Glyce
<b>Storage</b>	Store at -20 °C for one year. Avoid repeated freeze/thaw cycles. When reconstituted in sterile pH 7.4 0.01M PBS or diluent of antibody the antibody is stable for at least two weeks at 2-4 °C.

## Protein Information

<b>Name</b>	BAMBI
<b>Synonyms</b>	NMA
<b>Function</b>	Negatively regulates TGF-beta signaling.
<b>Cellular Location</b>	Membrane; Single-pass type I membrane protein
<b>Tissue Location</b>	High expression in kidney medulla, placenta and spleen; low in kidney cortex, liver, prostate and gut. Not expressed in normal skin, expression is high in melanocytes and in 3 out of 11 melanoma metastases tested

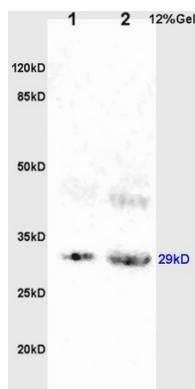
## Background

Negatively regulates TGF-beta signaling.

## References

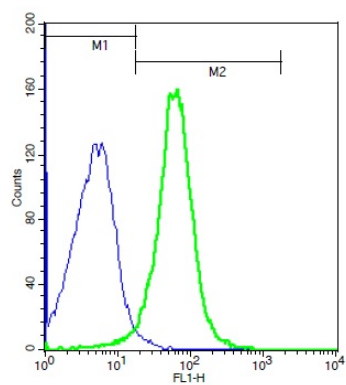
Degen W.G.J.,et al.Int. J. Cancer 65:460-465(1996).  
 Kalnine N.,et al.Submitted (MAY-2003) to the EMBL/GenBank/DDBJ databases.  
 Deloukas P.,et al.Nature 429:375-381(2004).  
 Zhang Z.,et al.Protein Sci. 13:2819-2824(2004).

## Images



L1 rat brain lysates L2 rat kidney lysates probed with Anti BAMBI Polyclonal Antibody, Unconjugated (AP52256) at 1:200 overnight at 4 °C. Followed by conjugation to secondary antibody at 1:3000 for 90 min at 37 °C. Predicted band 29kD. Observed band size:29kD.

Mouse splenocytes probed with Rabbit Anti-BAMBI Polyclonal Antibody, Unconjugated (AP52256) (green) at 1:100 for 40 minutes followed by a FITC conjugated secondary compared to control cells (blue).



Please note: All products are 'FOR RESEARCH USE ONLY. NOT FOR USE IN DIAGNOSTIC OR THERAPEUTIC PROCEDURES'.