

# IL17RB Rabbit pAb

IL17RB Rabbit pAb  
Catalog # AP52329

## Product Information

---

<b>Application</b>	WB, E
<b>Primary Accession</b>	<a href="#">Q9NRM6</a>
<b>Reactivity</b>	Human, Mouse, Rat
<b>Host</b>	Rabbit
<b>Clonality</b>	Polyclonal
<b>Calculated MW</b>	55885
<b>Physical State</b>	Liquid
<b>Immunogen</b>	KLH conjugated synthetic peptide derived from human IL-17RB
<b>Epitope Specificity</b>	221-320/502
<b>Isotype</b>	IgG
<b>Purity</b>	affinity purified by Protein A
<b>Buffer</b>	0.01M TBS (pH7.4) with 1% BSA, 0.02% Proclin300 and 50% Glycerol.
<b>SUBCELLULAR LOCATION</b>	Isoform 1: Cell membrane; Single-pass type I membrane protein. Isoform 2: Secreted.
<b>SIMILARITY</b>	Contains 1 SEFIR domain.
<b>SUBUNIT</b>	Interacts with DAZAP2.
<b>Important Note</b>	This product as supplied is intended for research use only, not for use in human, therapeutic or diagnostic applications.
<b>Background Descriptions</b>	The protein encoded by this gene is a cytokine receptor. This receptor specifically binds to IL17B and IL17E, but does not bind to IL17 and IL17C. This receptor has been shown to mediate the activation of NF-kappaB and the production of IL8 induced by IL17E. The expression of the rat counterpart of this gene was found to be significantly up-regulated during intestinal inflammation, which suggested the immunoregulatory activity of this receptor. [provided by RefSeq].

## Additional Information

---

<b>Gene ID</b>	55540
<b>Other Names</b>	Interleukin-17 receptor B, IL-17 receptor B, IL-17RB, Cytokine receptor-like 4, IL-17 receptor homolog 1, IL-17Rh1, IL17Rh1, Interleukin-17B receptor, IL-17B receptor, IL17RB, CRL4, EVI27, IL17BR
<b>Target/Specificity</b>	Expressed in several endocrine tissues, mostly in fetal and adult liver, kidney, pancreas, testis, colon, brain and small intestine; not detected in peripheral blood leukocytes, lymphoid organs, and most cell lines.
<b>Dilution</b>	WB=1:500-2000,ELISA=1:5000-10000
<b>Storage</b>	Store at -20 °C for one year. Avoid repeated freeze/thaw cycles. When

reconstituted in sterile pH 7.4 0.01M PBS or diluent of antibody the antibody is stable for at least two weeks at 2-4 °C.

## Protein Information

<b>Name</b>	IL17RB
<b>Synonyms</b>	CRL4, EVI27, IL17BR
<b>Function</b>	Receptor for the pro-inflammatory cytokines IL17B and IL17E. May play a role in controlling the growth and/or differentiation of hematopoietic cells.
<b>Cellular Location</b>	[Isoform 1]: Cell membrane; Single-pass type I membrane protein
<b>Tissue Location</b>	Expressed in several endocrine tissues, mostly in fetal and adult liver, kidney, pancreas, testis, colon, brain and small intestine; not detected in peripheral blood leukocytes, lymphoid organs, and most cell lines

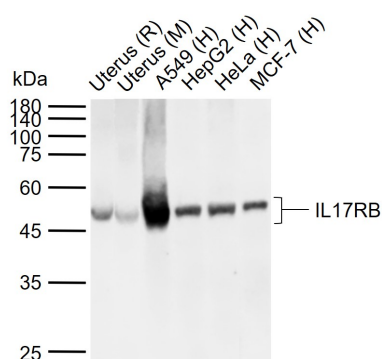
## Background

The protein encoded by this gene is a cytokine receptor. This receptor specifically binds to IL17B and IL17E, but does not bind to IL17 and IL17C. This receptor has been shown to mediate the activation of NF-kappaB and the production of IL8 induced by IL17E. The expression of the rat counterpart of this gene was found to be significantly up-regulated during intestinal inflammation, which suggested the immunoregulatory activity of this receptor. [provided by RefSeq].

## References

Tian E.,et al.Oncogene 19:2098-2109(2000).  
Shi Y.,et al.J. Biol. Chem. 275:19167-19176(2000).  
Zhang W.,et al.Submitted (MAR-2000) to the EMBL/GenBank/DDBJ databases.  
Clark H.F.,et al.Genome Res. 13:2265-2270(2003).  
Zhang Z.,et al.Protein Sci. 13:2819-2824(2004).

## Images



### Sample:

Lane 1: Rat Uterus tissue lysates  
Lane 2: Mouse Uterus tissue lysates  
Lane 3: Human A549 cell lysates  
Lane 4: Human HepG2 cell lysates  
Lane 5: Human HeLa cell lysates  
Lane 6: Human MCF-7 cell lysates

Primary: Anti-IL17RB (AP52329) at 1/1000 dilution  
Secondary: IRDye800CW Goat Anti-Rabbit IgG at 1/20000 dilution

Predicted band size: 54 kDa  
Observed band size: 50 kDa

Please note: All products are 'FOR RESEARCH USE ONLY. NOT FOR USE IN DIAGNOSTIC OR THERAPEUTIC PROCEDURES'.