

HOXC6 Antibody (C-term)

Affinity Purified Rabbit Polyclonal Antibody (Pab)

Catalog # AP5232b

Product Information

Application	FC, WB, E
Primary Accession	P09630
Other Accession	P10629
Reactivity	Human, Mouse
Predicted	Mouse
Host	Rabbit
Clonality	Polyclonal
Isotype	Rabbit IgG
Calculated MW	26915
Antigen Region	200-227

Additional Information

Gene ID	3223
Other Names	Homeobox protein Hox-C6, Homeobox protein CP25, Homeobox protein HHOC8, Homeobox protein Hox-3C, HOXC6, HOX3C
Target/Specificity	This HOXC6 antibody is generated from rabbits immunized with a KLH conjugated synthetic peptide between 200-227 amino acids from the C-terminal region of human HOXC6.
Dilution	FC~~1:10~50 WB~~1:1000 E~~Use at an assay dependent concentration.
Format	Purified polyclonal antibody supplied in PBS with 0.09% (W/V) sodium azide. This antibody is purified through a protein A column, followed by peptide affinity purification.
Storage	Maintain refrigerated at 2-8°C for up to 2 weeks. For long term storage store at -20°C in small aliquots to prevent freeze-thaw cycles.
Precautions	HOXC6 Antibody (C-term) is for research use only and not for use in diagnostic or therapeutic procedures.

Protein Information

Name	HOXC6
Synonyms	HOX3C
Function	Sequence-specific transcription factor which is part of a developmental

regulatory system that provides cells with specific positional identities on the anterior-posterior axis.

Cellular Location

Nucleus.

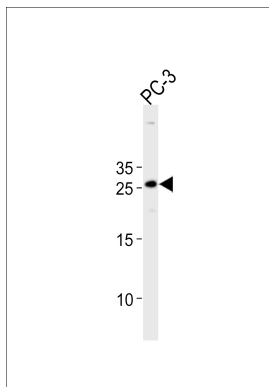
Background

This protein belongs to the homeobox family, members of which encode a highly conserved family of transcription factors that play an important role in morphogenesis in all multicellular organisms. Mammals possess four similar homeobox gene clusters, HOXA, HOXB, HOXC and HOXD, which are located on different chromosomes and consist of 9 to 11 genes arranged in tandem. This gene, HOXC6, is one of several HOXC genes located in a cluster on chromosome 12. Three genes, HOXC5, HOXC4 and HOXC6, share a 5' non-coding exon.

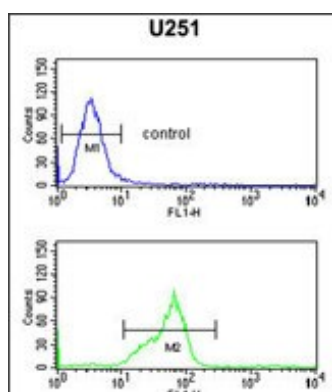
References

Zhang, X., et al. J. Cell. Mol. Med. 11(2):299-306(2007)
Hori, Y., et al. PLoS Med. 2 (4), E103 (2005)
Ramachandran, S., et al. Oncogene 24(1):188-198(2005)

Images



HOXC6 Antibody (C-term) (Cat. #AP5232b) western blot analysis in PC-3 cell line lysates (35ug/lane). This demonstrates the HOXC6 antibody detected the HOXC6 protein (arrow).



HOXC6 Antibody (C-term) (Cat. #AP5232b) flow cytometric analysis of U251 cells (bottom histogram) compared to a negative control cell (top histogram). FITC-conjugated goat-anti-rabbit secondary antibodies were used for the analysis.

Please note: All products are 'FOR RESEARCH USE ONLY. NOT FOR USE IN DIAGNOSTIC OR THERAPEUTIC PROCEDURES'.