

Cyclin E1 (Phospho-Thr395) Antibody

Purified Rabbit Polyclonal Antibody (Pab)

Catalog # AP52368

Product Information

Application	WB, IHC
Primary Accession	P24864
Reactivity	Human
Host	Rabbit
Clonality	Polyclonal
Calculated MW	47077

Additional Information

Gene ID	898
Other Names	G1/S-specific cyclin-E1, CCNE1, CCNE
Dilution	WB~~1:1000 IHC~~1:50~100
Format	Rabbit IgG in phosphate buffered saline (without Mg ²⁺ and Ca ²⁺), pH 7.4, 150mM NaCl, 0.09% (W/V) sodium azide and 50% glycerol.
Storage Conditions	-20°C

Protein Information

Name	CCNE1
Synonyms	CCNE
Function	Essential for the control of the cell cycle at the G1/S (start) transition.
Cellular Location	Nucleus.
Tissue Location	Highly expressed in testis and placenta. Low levels in bronchial epithelial cells.

Background

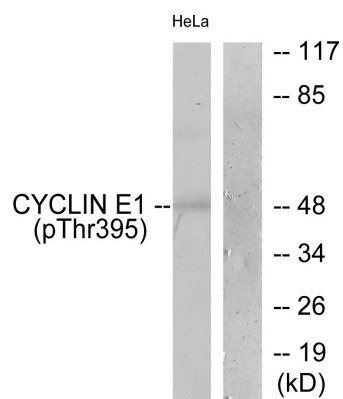
Essential for the control of the cell cycle at the G1/S (start) transition.

References

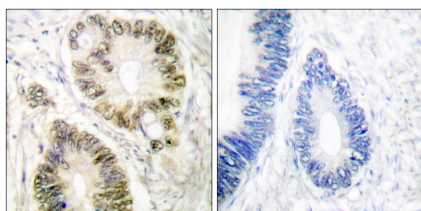
Lew D.J.,et al.Cell 66:1197-1206(1991).

Koff A.,et al.Cell 66:1217-1228(1991).
Ohtsubo M.,et al.Mol. Cell. Biol. 15:2612-2624(1995).
Ota T.,et al.Nat. Genet. 36:40-45(2004).
Geng Y.,et al.Oncogene 12:1173-1180(1996).

Images



Western blot analysis of extracts from HeLa cells, treated with Paclitaxel (1uM, 60mins), using Cyclin E1 (phospho-Thr395) antibody.



Immunohistochemical analysis of paraffin-embedded human colon carcinoma tissue using Cyclin E1 (phospho-Thr395) antibody

Please note: All products are 'FOR RESEARCH USE ONLY. NOT FOR USE IN DIAGNOSTIC OR THERAPEUTIC PROCEDURES'.