

# STAT5B (Phospho-Ser731) Antibody

Purified Rabbit Polyclonal Antibody (Pab)

Catalog # AP52370

## Product Information

---

<b>Application</b>	WB, IHC
<b>Primary Accession</b>	<a href="#">P42229</a>
<b>Other Accession</b>	<a href="#">P51692</a>
<b>Reactivity</b>	Human
<b>Host</b>	Rabbit
<b>Clonality</b>	Polyclonal
<b>Calculated MW</b>	90647

## Additional Information

---

<b>Gene ID</b>	6776
<b>Other Names</b>	Signal transducer and activator of transcription 5A, STAT5A, STAT5
<b>Dilution</b>	WB~~1:1000 IHC~~1:50~100
<b>Format</b>	Rabbit IgG in phosphate buffered saline (without Mg <sup>2+</sup> and Ca <sup>2+</sup> ), pH 7.4, 150mM NaCl, 0.09% (W/V) sodium azide and 50% glycerol.
<b>Storage Conditions</b>	-20°C

## Protein Information

---

<b>Name</b>	STAT5A
<b>Synonyms</b>	STAT5
<b>Function</b>	Carries out a dual function: signal transduction and activation of transcription. Mediates cellular responses to the cytokine KITLG/SCF and other growth factors. Mediates cellular responses to ERBB4. May mediate cellular responses to activated FGFR1, FGFR2, FGFR3 and FGFR4. Binds to the GAS element and activates PRL- induced transcription. Regulates the expression of milk proteins during lactation.
<b>Cellular Location</b>	Cytoplasm. Nucleus. Note=Translocated into the nucleus in response to phosphorylation

## Background

---

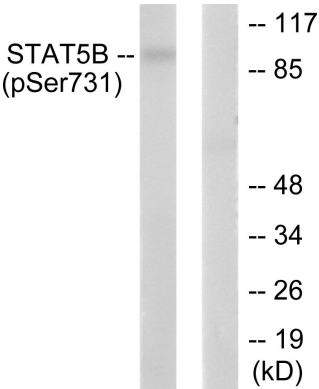
Carries out a dual function: signal transduction and activation of transcription. Mediates cellular responses

to the cytokine KITLG/SCF and other growth factors. Mediates cellular responses to ERBB4. May mediate cellular responses to activated FGFR1, FGFR2, FGFR3 and FGFR4. Binds to the GAS element and activates PRL-induced transcription. Regulates the expression of milk proteins during lactation.

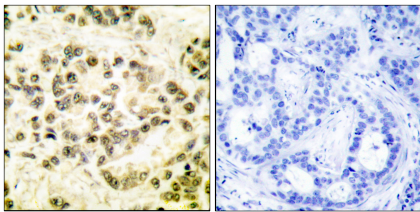
## References

Hou J.,et al.Immunity 2:321-329(1995).  
Lin J.X.,et al.Submitted (DEC-1995) to the EMBL/GenBank/DDBJ databases.  
Tan D.,et al.Submitted (APR-2006) to the EMBL/GenBank/DDBJ databases.  
Ota T.,et al.Nat. Genet. 36:40-45(2004).  
Zody M.C.,et al.Nature 440:1045-1049(2006).

## Images



Western blot analysis of extracts from RAW264.7 cells, treated with EGF (200ng/ml, 30mins), using STAT5B (phospho-Ser731) antibody.



Immunohistochemical analysis of paraffin-embedded human breast carcinoma tissue using STAT5B (phospho-Ser731) antibody.

Please note: All products are 'FOR RESEARCH USE ONLY. NOT FOR USE IN DIAGNOSTIC OR THERAPEUTIC PROCEDURES'.