

# LHPL2 Antibody (C-term)

Affinity Purified Rabbit Polyclonal Antibody (Pab)

Catalog # AP5242b

## Product Information

---

<b>Application</b>	WB, E
<b>Primary Accession</b>	<a href="#">Q6ZUX7</a>
<b>Other Accession</b>	<a href="#">Q8BGA2</a>
<b>Reactivity</b>	Human, Hamster
<b>Predicted</b>	Mouse
<b>Host</b>	Rabbit
<b>Clonality</b>	Polyclonal
<b>Isotype</b>	Rabbit IgG
<b>Clone Names</b>	RB26480
<b>Calculated MW</b>	24486
<b>Antigen Region</b>	196-223

## Additional Information

---

<b>Gene ID</b>	10184
<b>Other Names</b>	Lipoma HMGIC fusion partner-like 2 protein, LHFPL2, KIAA0206
<b>Target/Specificity</b>	This LHPL2 antibody is generated from rabbits immunized with a KLH conjugated synthetic peptide between 196-223 amino acids from the C-terminal region of human LHPL2.
<b>Dilution</b>	WB~~1:1000 E~~Use at an assay dependent concentration.
<b>Format</b>	Purified polyclonal antibody supplied in PBS with 0.09% (W/V) sodium azide. This antibody is purified through a protein A column, followed by peptide affinity purification.
<b>Storage</b>	Maintain refrigerated at 2-8°C for up to 2 weeks. For long term storage store at -20°C in small aliquots to prevent freeze-thaw cycles.
<b>Precautions</b>	LHPL2 Antibody (C-term) is for research use only and not for use in diagnostic or therapeutic procedures.

## Protein Information

---

<b>Name</b>	LHFPL2 ( <a href="#">HGNC:6588</a> )
<b>Synonyms</b>	KIAA0206
<b>Function</b>	Plays a role in female and male fertility. Involved in distal reproductive tract

development.

**Cellular Location**

Membrane; Multi-pass membrane protein

**Tissue Location**

Expressed in all tissues and cell lines examined except brain and peripheral blood leukocytes

## Background

---

LHPL2 is a member of the lipoma HMGIC fusion partner (LHFP) gene family, which is a subset of the superfamily of tetraspan transmembrane protein encoding genes.

## References

---

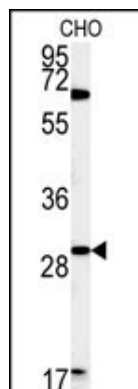
Potkin, S.G., et al. PLoS ONE 4 (8), E6501 (2009) :

Longo-Guess, C.M., et al. Proc. Natl. Acad. Sci. U.S.A. 102(22):7894-7899(2005)

Petit, M.M., et al. Genomics 57(3):438-441(1999)

## Images

---



Western blot analysis of LHPL2 Antibody (C-term) (Cat. #AP5242b) in CHO cell line lysates (35ug/lane). LHPL2 (arrow) was detected using the purified Pab.

Please note: All products are 'FOR RESEARCH USE ONLY. NOT FOR USE IN DIAGNOSTIC OR THERAPEUTIC PROCEDURES'.