

# TAL-1 (Phospho-Ser122) Antibody

Purified Rabbit Polyclonal Antibody (Pab)

Catalog # AP52604

## Product Information

---

<b>Application</b>	WB
<b>Primary Accession</b>	<a href="#">P17542</a>
<b>Host</b>	Rabbit
<b>Clonality</b>	Polyclonal
<b>Calculated MW</b>	34271

## Additional Information

---

<b>Gene ID</b>	6886
<b>Other Names</b>	T-cell acute lymphocytic leukemia protein 1, TAL-1, Class A basic helix-loop-helix protein 17, bHLHa17, Stem cell protein, T-cell leukemia/lymphoma protein 5, TAL1, BHLHA17, SCL, TCL5
<b>Dilution</b>	WB~~1:1000
<b>Format</b>	Rabbit IgG in phosphate buffered saline (without Mg <sup>2+</sup> and Ca <sup>2+</sup> ), pH 7.4, 150mM NaCl, 0.09% (W/V) sodium azide and 50% glycerol.
<b>Storage Conditions</b>	-20°C

## Protein Information

---

<b>Name</b>	TAL1
<b>Synonyms</b>	BHLHA17, SCL, TCL5
<b>Function</b>	Implicated in the genesis of hemopoietic malignancies. It may play an important role in hemopoietic differentiation. Serves as a positive regulator of erythroid differentiation (By similarity).
<b>Cellular Location</b>	Nucleus {ECO:0000255 PROSITE-ProRule:PRU00981}.
<b>Tissue Location</b>	Leukemic stem cell.

## Background

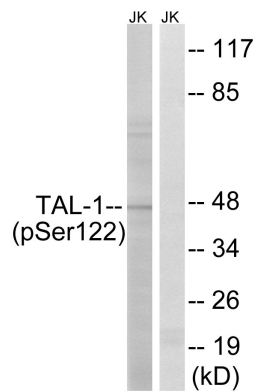
---

Implicated in the genesis of hemopoietic malignancies. It may play an important role in hemopoietic differentiation. Serves as a positive regulator of erythroid differentiation (By similarity).

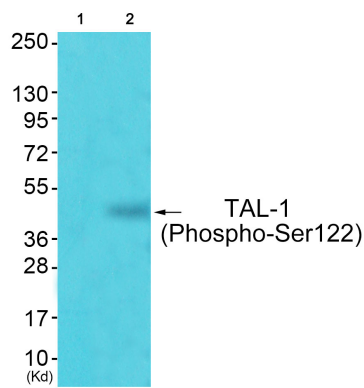
## References

Aplan P.D.,et al.Mol. Cell. Biol. 10:6426-6435(1990).  
Gregory S.G.,et al.Nature 441:315-321(2006).  
Mural R.J.,et al.Submitted (SEP-2005) to the EMBL/GenBank/DDBJ databases.  
Chen Q.,et al.J. Exp. Med. 172:1403-1408(1990).  
Begley C.G.,et al.Proc. Natl. Acad. Sci. U.S.A. 86:10128-10132(1989).

## Images



Western blot analysis of extracts from Jurkat cells, treated with PMA (125 ng/ml, 30mins), using TAL-1 (Phospho-Ser122) antibody.



Western blot analysis of extracts from JK cells (Lane 2), using TAL-1 (Phospho-Ser122) Antibody. The lane on the left is treated with synthesized peptide.

Please note: All products are 'FOR RESEARCH USE ONLY. NOT FOR USE IN DIAGNOSTIC OR THERAPEUTIC PROCEDURES'.