

RPS26 Antibody (N-term)

Affinity Purified Rabbit Polyclonal Antibody (Pab)

Catalog # AP5261a

Product Information

Application	WB, E
Primary Accession	P62854
Other Accession	P62856 , P49171 , P62855 , P61251 , Q56JV1
Reactivity	Human
Predicted	Bovine, Monkey, Mouse, Pig, Rat
Host	Rabbit
Clonality	Polyclonal
Isotype	Rabbit IgG
Clone Names	RB26222
Calculated MW	13015
Antigen Region	1-30

Additional Information

Gene ID	6231
Other Names	40S ribosomal protein S26, RPS26
Target/Specificity	This RPS26 antibody is generated from rabbits immunized with a KLH conjugated synthetic peptide between 1-30 amino acids from the N-terminal region of human RPS26.
Dilution	WB~~1:1000 E~~Use at an assay dependent concentration.
Format	Purified polyclonal antibody supplied in PBS with 0.09% (W/V) sodium azide. This antibody is purified through a protein A column, followed by peptide affinity purification.
Storage	Maintain refrigerated at 2-8°C for up to 2 weeks. For long term storage store at -20°C in small aliquots to prevent freeze-thaw cycles.
Precautions	RPS26 Antibody (N-term) is for research use only and not for use in diagnostic or therapeutic procedures.

Protein Information

Name	RPS26
Function	Component of the small ribosomal subunit (PubMed: 23636399 , PubMed: 25901680 , PubMed: 25957688). The ribosome is a large ribonucleoprotein complex responsible for the synthesis of proteins in the

cell (PubMed:[23636399](#), PubMed:[25901680](#), PubMed:[25957688](#)).

Cellular Location

Cytoplasm, cytosol. Cytoplasm Rough endoplasmic reticulum {ECO:0000250|UniProtKB:P49171} Note=Detected on cytosolic polysomes (PubMed:25957688). Detected in ribosomes that are associated with the rough endoplasmic reticulum (By similarity). {ECO:0000250|UniProtKB:P49171, ECO:0000269|PubMed:25957688}

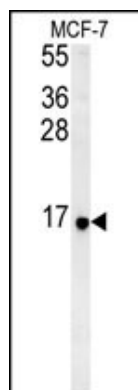
Background

Ribosomes, the organelles that catalyze protein synthesis, consist of a small 40S subunit and a large 60S subunit. Together these subunits are composed of 4 RNA species and approximately 80 structurally distinct proteins. This gene encodes a ribosomal protein that is a component of the 40S subunit. The protein belongs to the S26E family of ribosomal proteins. It is located in the cytoplasm. As is typical for genes encoding ribosomal proteins, there are multiple processed pseudogenes of this gene dispersed through the genome.

References

Doherty, L., et al. Am. J. Hum. Genet. 86(2):222-228(2010)
Venkatesan, K., et al. Nat. Methods 6(1):83-90(2009)
Nature 447(7145):661-678(2007)

Images



RPS26 Antibody (N-term) (Cat. #AP5261a) western blot analysis in MCF-7 cell line lysates (35ug/lane). This demonstrates the RPS26 antibody detected the RPS26 protein (arrow).

Please note: All products are 'FOR RESEARCH USE ONLY. NOT FOR USE IN DIAGNOSTIC OR THERAPEUTIC PROCEDURES'.