

# pyruvate dehydrogenase (lipoamide) alpha 1 Antibody

Purified Mouse Monoclonal Antibody (Mab)

Catalog # AP52670

## Product Information

---

<b>Application</b>	WB, ICC
<b>Primary Accession</b>	<a href="#">P08559</a>
<b>Reactivity</b>	Human, Mouse
<b>Host</b>	Mouse
<b>Clonality</b>	Monoclonal
<b>Isotype</b>	IgG1
<b>Calculated MW</b>	43296

## Additional Information

---

<b>Gene ID</b>	5160
<b>Other Names</b>	mitochondrial;ODPA_HUMAN;PDH;PDHA;PDHA1;PDHCE1A;PDHE1 A type I;PDHE1-A type I;PHE1A; Pyruvate Dehydrogenase (lipoamide) alpha 1;Pyruvate dehydrogenase complex, E1 alpha polypeptide 1;Pyruvate Dehydrogenase E1 alpha;Pyruvate dehydrogenase E1 component subunit alpha;Pyruvate dehydrogenase E1 component subunit alpha, somatic form, mitochondrial;somatic form.
<b>Dilution</b>	WB~~1:1000 ICC~~1:100
<b>Format</b>	Purified mouse monoclonal in buffer containing 0.1M Tris-Glycine (pH 7.4, 150 mM NaCl) with 0.09% (W/V) sodium azide, 50%,glycerol
<b>Storage</b>	Store at -20 °C.Stable for 12 months from date of receipt

## Protein Information

---

<b>Name</b>	PDHA1
<b>Synonyms</b>	PHE1A
<b>Function</b>	The pyruvate dehydrogenase complex catalyzes the overall conversion of pyruvate to acetyl-CoA and CO(2), and thereby links the glycolytic pathway to the tricarboxylic cycle.
<b>Cellular Location</b>	Mitochondrion matrix.
<b>Tissue Location</b>	Ubiquitous.

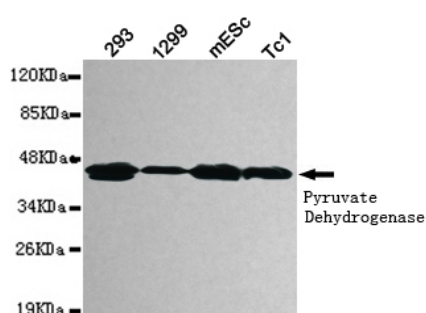
## Background

The pyruvate dehydrogenase complex catalyzes the overall conversion of pyruvate to acetyl-CoA and CO<sub>2</sub>, and thereby links the glycolytic pathway to the tricarboxylic cycle.

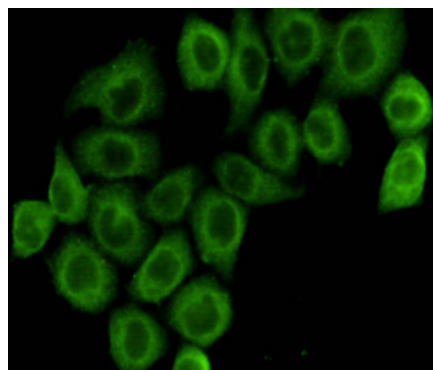
## References

Koike K.,et al.Gene 93:307-311(1990).  
Ho L.,et al.Proc. Natl. Acad. Sci. U.S.A. 86:5330-5334(1989).  
Huh T.L.,et al.Submitted (APR-1990) to the EMBL/GenBank/DDBJ databases.  
Dahl H.-H.M.,et al.J. Biol. Chem. 262:7398-7403(1987).  
Maragos C.,et al.J. Biol. Chem. 264:12294-12298(1989).

## Images



Western blot detection of pyruvate dehydrogenase (lipoamide) alpha 1 in 293,1299,mEsc and Tc1 cell lysates using pyruvate dehydrogenase (lipoamide) alpha 1 mouse mAb (1:1000 diluted).Predicted band size: 43KDa.Observed band size: 43KDa.



Immunocytochemistry staining of HeLa cells fixed with 4% Paraformaldehyde and using anti-pyruvate dehydrogenase (lipoamide) alpha 1 mouse mAb(dilution 1:100).

Please note: All products are 'FOR RESEARCH USE ONLY. NOT FOR USE IN DIAGNOSTIC OR THERAPEUTIC PROCEDURES'.