

# Mannose Phosphate Isomerase Antibody

Purified Mouse Monoclonal Antibody (Mab)

Catalog # AP52673

## Product Information

Application	WB, ICC
Primary Accession	<a href="#">P34949</a>
Reactivity	Human
Host	Mouse
Clonality	Monoclonal
Isotype	IgG1
Calculated MW	46656

## Additional Information

Gene ID	4351
Other Names	PMI1;CDG1B;FLJ39201;Mannose 6 phosphate isomerase;Mannose-6-phosphate isomerase; MANNOSEPHOSPHATE ISOMERASE;MGC94106;MPI;MPI_HUMAN;Phosphohexomutase;phosphomannose isomerase 1;Phosphomannose isomerase;PMI;PMI1.
Dilution	WB~~1:1000 ICC~~1:300
Format	Purified mouse monoclonal in buffer containing 0.1M Tris-Glycine (pH 7.4, 150 mM NaCl) with 0.09% (W/V) sodium azide, 50%,glycerol
Storage	Store at -20 °C.Stable for 12 months from date of receipt

## Protein Information

Name	MPI ( <a href="#">HGNC:7216</a> )
Synonyms	PMI1
Function	Isomerase that catalyzes the interconversion of fructose-6-P and mannose-6-P and has a critical role in the supply of D-mannose derivatives required for many eukaryotic glycosylation reactions.
Cellular Location	Cytoplasm {ECO:0000250 UniProtKB:Q924M7}.
Tissue Location	Expressed in all tissues, but more abundant in heart, brain and skeletal muscle.

## Background

Involved in the synthesis of the GDP-mannose and dolichol-phosphate-mannose required for a number of critical mannosyl transfer reactions.

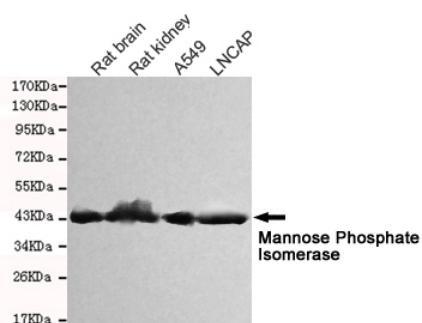
## References

---

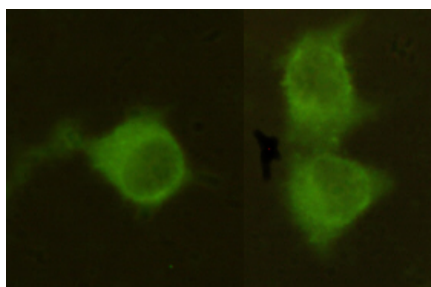
Proudfoot A.E.I.,et al.Eur. J. Biochem. 219:415-423(1994).  
Schollen E.,et al.Hum. Mutat. 16:247-252(2000).  
Ota T.,et al.Nat. Genet. 36:40-45(2004).  
Mural R.J.,et al.Submitted (SEP-2005) to the EMBL/GenBank/DBJ databases.  
Gauci S.,et al.Anal. Chem. 81:4493-4501(2009).

## Images

---



Western blot detection of Mannose Phosphate Isomerase in Rat kidney, Rat brain, A549 and Lncap cell lysates and using Mannose Phosphate Isomerase mouse mAb (1:1000 diluted). Predicted band size: 54 kDa. Observed band size: 45 kDa.



Immunocytochemistry stain of Hela using Mannose Phosphate Isomerase mouse mAb (1:300).

Please note: All products are 'FOR RESEARCH USE ONLY. NOT FOR USE IN DIAGNOSTIC OR THERAPEUTIC PROCEDURES'.