

SFT2D3 Antibody (N-term)

Affinity Purified Rabbit Polyclonal Antibody (Pab)

Catalog # AP5268a

Product Information

Application	WB, IHC-P, FC, E
Primary Accession	Q587I9
Reactivity	Human
Host	Rabbit
Clonality	Polyclonal
Isotype	Rabbit IgG
Clone Names	RB26636
Calculated MW	21790
Antigen Region	14-42

Additional Information

Gene ID	84826
Other Names	Vesicle transport protein SFT2C, SFT2 domain-containing protein 3, SFT2D3 (HGNC:28767)
Target/Specificity	This SFT2D3 antibody is generated from rabbits immunized with a KLH conjugated synthetic peptide between 14-42 amino acids from the N-terminal region of human SFT2D3.
Dilution	WB~~1:1000 IHC-P~~1:100~500 FC~~1:10~50 E~~Use at an assay dependent concentration.
Format	Purified polyclonal antibody supplied in PBS with 0.09% (W/V) sodium azide. This antibody is purified through a protein A column, followed by peptide affinity purification.
Storage	Maintain refrigerated at 2-8°C for up to 2 weeks. For long term storage store at -20°C in small aliquots to prevent freeze-thaw cycles.
Precautions	SFT2D3 Antibody (N-term) is for research use only and not for use in diagnostic or therapeutic procedures.

Protein Information

Name	SFT2D3 (HGNC:28767)
Function	May be involved in fusion of retrograde transport vesicles derived from an endocytic compartment with the Golgi complex.

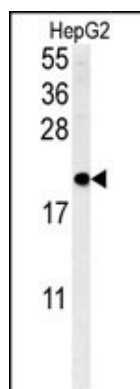
Background

SFT2D3 may be involved in fusion of retrograde transport vesicles derived from an endocytic compartment with the Golgi complex.

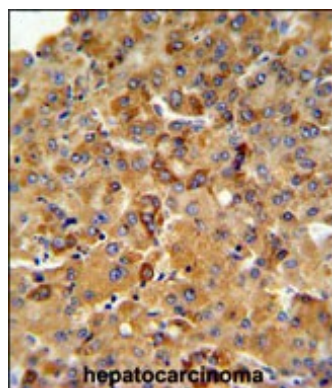
References

Hillier, L.W., et al. Nature 434(7034):724-731(2005)

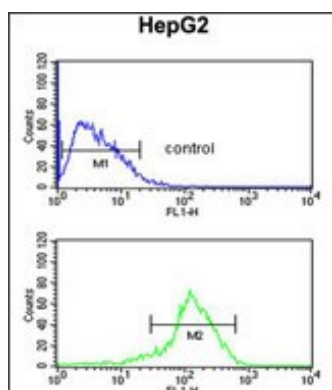
Images



SFT2D3 Antibody (N-term) (Cat. #AP5268a) western blot analysis in HepG2 cell line lysates (35ug/lane). This demonstrates the SFT2D3 antibody detected the SFT2D3 protein (arrow).



SFT2D3 Antibody (N-term) (Cat. #AP5268a) IHC analysis in formalin fixed and paraffin embedded human hepatocarcinoma followed by peroxidase conjugation of the secondary antibody and DAB staining. This data demonstrates the use of the SFT2D3 Antibody (N-term) for immunohistochemistry. Clinical relevance has not been evaluated.



SFT2D3 Antibody (N-term) (Cat. #AP5268a) flow cytometric analysis of HepG2 cells (bottom histogram) compared to a negative control cell (top histogram). FITC-conjugated goat-anti-rabbit secondary antibodies were used for the analysis.