

PP2A alpha and beta Antibody

Purified Mouse Monoclonal Antibody (Mab)

Catalog # AP52702

Product Information

Primary Accession	P62714
Host	Mouse
Clonality	Monoclonal
Isotype	IgG2a
Calculated MW	35575

Additional Information

Gene ID	5516
Other Names	PP2A beta;PP2A-beta;PP2AB_HUMAN;PP2Abeta;PP2CB;Ppp2cb;Protein phosphatase 2 (formerly 2A), catalytic subunit, beta isoform;Protein phosphatase 2 catalytic subunit beta isozyme;Protein phosphatase 2, catalytic subunit, beta isoform;Protein phosphatase 2A catalytic subunit beta isoform;Protein phosphatase type 2A catalytic subunit;Serine/threonine protein phosphatase 2A catalytic subunit beta;Serine/threonine-protein phosphatase 2A catalytic subunit beta isoform.
Format	Purified mouse monoclonal in buffer containing 0.1M Tris-Glycine (pH 7.4, 150 mM NaCl) with 0.09% (W/V) sodium azide,50% glycerol.
Storage	Store at -20 °C.Stable for 12 months from date of receipt

Protein Information

Name	PPP2CB (HGNC:9300)
Function	Catalytic subunit of protein phosphatase 2A (PP2A), a serine/threonine phosphatase involved in the regulation of a wide variety of enzymes, signal transduction pathways, and cellular events (Probable). PP2A can modulate the activity of phosphorylase B kinase, casein kinase 2, mitogen-stimulated S6 kinase, and MAP-2 kinase. Part of the striatin-interacting phosphatase and kinase (STRIPAK) complexes. STRIPAK complexes have critical roles in protein (de)phosphorylation and are regulators of multiple signaling pathways including Hippo, MAPK, nuclear receptor and cytoskeleton remodeling. Different types of STRIPAK complexes are involved in a variety of biological processes such as cell growth, differentiation, apoptosis, metabolism and immune regulation (PubMed: 18782753).
Cellular Location	Cytoplasm. Nucleus. Chromosome, centromere. Cytoplasm, cytoskeleton, spindle pole. Note=In prometaphase cells, but not in anaphase cells, localizes at centromeres. During mitosis, also found at spindle poles

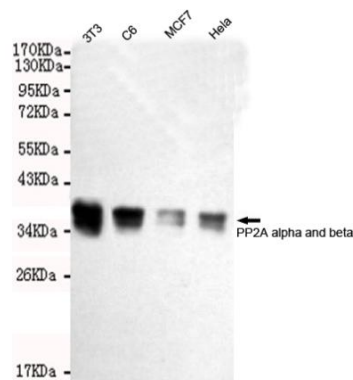
Background

PP2A can modulate the activity of phosphorylase B kinase casein kinase 2, mitogen-stimulated S6 kinase, and MAP-2 kinase.

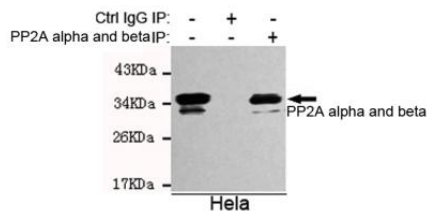
References

Hemmings B.A.,et al.Nucleic Acids Res. 16:11366-11366(1988).
Ebert L.,et al.Submitted (JUN-2004) to the EMBL/GenBank/DDBJ databases.
Mural R.J.,et al.Submitted (SEP-2005) to the EMBL/GenBank/DDBJ databases.
Arino J.,et al.Proc. Natl. Acad. Sci. U.S.A. 85:4252-4256(1988).
Khew-Goodall Y.,et al.Biochemistry 30:89-97(1991).

Images



Western blot detection of PP2A alpha and beta in HeLa,MCF7,C6 and 3T3 cell lysates using PP2A alpha and beta mouse mAb (1:2000 diluted).Predicted band size:36KDa.Observed band size:36KDa.



Immunoprecipitation analysis of HeLa cell lysates using PP2A alpha and beta mouse mAb.

Please note: All products are 'FOR RESEARCH USE ONLY. NOT FOR USE IN DIAGNOSTIC OR THERAPEUTIC PROCEDURES'.