

Aurora Kinase A Antibody

Purified Mouse Monoclonal Antibody (Mab)

Catalog # AP52717

Product Information

Application	WB, ICC
Primary Accession	O14965
Reactivity	Human
Host	Mouse
Clonality	Monoclonal
Isotype	IgG1
Calculated MW	45823

Additional Information

Gene ID	6790
Other Names	AIK;ARK-1;ARK1;AURA;AURKA;Aurora 2;Aurora A;Aurora Family Kinase 1;aurora kinase A;Aurora Related Kinase 1;Aurora-related kinase 1;Aurora/IPL1 Like Kinase; Aurora/IPL1 Related Kinase 1;Aurora/IPL1-related kinase 1;AURORA2;AYK1;BRAK;Breast Tumor Amplified Kinase;Breast tumor-amplified kinase;BTAK;hARK1;IAK ;IPL1 Aurora Related Kinase 1;IPL1 Related Kinase;MGC34538;OTTHUMP00000031340;OTTHUMP00000031341;OTTHUMP00000031342;OTTHUMP00000031343;OTTHUMP00000031344; OTTHUMP00000031345;OTTHUMP00000166071;OTTHUMP00000166072;PPP1R47; Protein phosphatase 1, regulatory subunit 47;Serine/threonine kinase 15;Serine/threonine kinase 6;Serine/threonine kinase;Serine/threonine-protein kinase 15;Serine/threonine-protein kinase 6;Serine/threonine-protein kinase aurora-A;STK15;STK6; STK6_HUMAN;STK7.
Dilution	WB~~1:500 ICC~~1:50
Format	Liquid in PBS containing 50% glycerol, 0.5% BSA and 0.02% sodium azide, pH 7.3.
Storage	Store at -20 °C.Stable for 12 months from date of receipt

Protein Information

Name	AURKA (HGNC:11393)
Function	Mitotic serine/threonine kinase that contributes to the regulation of cell cycle progression (PubMed: 11039908 , PubMed: 12390251 , PubMed: 17125279 , PubMed: 17360485 , PubMed: 18615013 , PubMed: 26246606). Associates with the centrosome and the spindle microtubules during mitosis and plays a critical role in various mitotic events including the establishment of mitotic spindle, centrosome duplication, centrosome separation as well as

maturation, chromosomal alignment, spindle assembly checkpoint, and cytokinesis (PubMed:[14523000](#), PubMed:[26246606](#)). Required for normal spindle positioning during mitosis and for the localization of NUMA1 and DCTN1 to the cell cortex during metaphase (PubMed:[27335426](#)). Required for initial activation of CDK1 at centrosomes (PubMed:[13678582](#), PubMed:[15128871](#)). Phosphorylates numerous target proteins, including ARHGEF2, BORA, BRCA1, CDC25B, DLGP5, HDAC6, KIF2A, LATS2, NDEL1, PARD3, PPP1R2, PLK1, RASSF1, TACC3, p53/TP53 and TPX2 (PubMed:[11551964](#), PubMed:[14702041](#), PubMed:[15128871](#), PubMed:[15147269](#), PubMed:[15987997](#), PubMed:[17604723](#), PubMed:[18056443](#), PubMed:[18615013](#)). Phosphorylates MCRC1 which is required for MCRC1- mediated kinetochore fiber assembly and mitotic progression (PubMed:[27192185](#)). Regulates KIF2A tubulin depolymerase activity (PubMed:[19351716](#)). Important for microtubule formation and/or stabilization (PubMed:[18056443](#)). Required for normal axon formation (PubMed:[19812038](#)). Plays a role in microtubule remodeling during neurite extension (PubMed:[19668197](#)). Also acts as a key regulatory component of the p53/TP53 pathway, and particularly the checkpoint- response pathways critical for oncogenic transformation of cells, by phosphorylating and destabilizing p53/TP53 (PubMed:[14702041](#)). Phosphorylates its own inhibitors, the protein phosphatase type 1 (PP1) isoforms, to inhibit their activity (PubMed:[11551964](#)). Inhibits cilia outgrowth (By similarity). Required for cilia disassembly via phosphorylation of HDAC6 and subsequent deacetylation of alpha-tubulin (PubMed:[17604723](#), PubMed:[20643351](#)). Regulates protein levels of the anti-apoptosis protein BIRC5 by suppressing the expression of the SCF(FBXL7) E3 ubiquitin-protein ligase substrate adapter FBXL7 through the phosphorylation of the transcription factor FOXF1 (PubMed:[28218735](#)).

Cellular Location

Cytoplasm, cytoskeleton, microtubule organizing center, centrosome. Cytoplasm, cytoskeleton, spindle pole. Cytoplasm, cytoskeleton, microtubule organizing center, centrosome, centriole {ECO:0000250|UniProtKB:P97477}. Cell projection, neuron projection {ECO:0000250|UniProtKB:P97477}. Cell projection, cilium. Cytoplasm, cytoskeleton, cilium basal body. Basolateral cell membrane {ECO:0000250|UniProtKB:F1PNY0}. Note=Detected at the neurite hillock in developing neurons (By similarity). Localizes at the centrosome in mitotic cells from early prophase until telophase, but also localizes to the spindle pole MTs from prophase to anaphase (PubMed:17229885, PubMed:21225229, PubMed:9606188). Colocalized with SIRT2 at centrosome (PubMed:22014574). Moves to the midbody during both telophase and cytokinesis (PubMed:17726514). Associates with both the pericentriolar material (PCM) and centrioles (PubMed:22014574). The localization to the spindle poles is regulated by AAAS (PubMed:26246606) {ECO:0000250|UniProtKB:P97477, ECO:0000269|PubMed:17229885, ECO:0000269|PubMed:17726514, ECO:0000269|PubMed:21225229, ECO:0000269|PubMed:22014574, ECO:0000269|PubMed:26246606, ECO:0000269|PubMed:9606188}

Tissue Location

Highly expressed in testis and weakly in skeletal muscle, thymus and spleen. Also highly expressed in colon, ovarian, prostate, neuroblastoma, breast and cervical cancer cell lines

Background

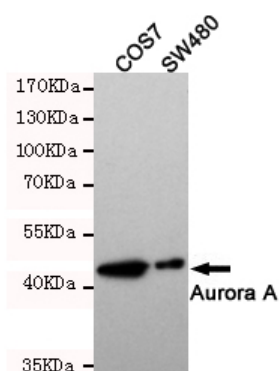
Mitotic serine/threonine kinases that contributes to the regulation of cell cycle progression. Associates with the centrosome and the spindle microtubules during mitosis and plays a critical role in various mitotic events including the establishment of mitotic spindle, centrosome duplication, centrosome separation as well as maturation, chromosomal alignment, spindle assembly checkpoint, and cytokinesis. Required for initial activation of CDK1 at centrosomes. Phosphorylates numerous target proteins, including ARHGEF2,

BORA, BRCA1, CDC25B, DLGP5, HDAC6, KIF2A, LATS2, NDEL1, PARD3, PPP1R2, PLK1, RASSF1, TACC3, p53/TP53 and TPX2. Regulates KIF2A tubulin depolymerase activity. Required for normal axon formation. Plays a role in microtubule remodeling during neurite extension. Important for microtubule formation and/or stabilization. Also acts as a key regulatory component of the p53/TP53 pathway, and particularly the checkpoint-response pathways critical for oncogenic transformation of cells, by phosphorylating and stabilizing p53/TP53. Phosphorylates its own inhibitors, the protein phosphatase type 1 (PP1) isoforms, to inhibit their activity. Necessary for proper cilia disassembly prior to mitosis.

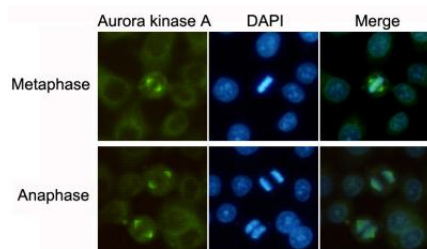
References

Kimura M.,et al.J. Biol. Chem. 272:13766-13771(1997).
 Shindo M.,et al.Biochem. Biophys. Res. Commun. 244:285-292(1998).
 Zhou H.,et al.Nat. Genet. 20:189-193(1998).
 Wang L.,et al.Submitted (OCT-1999) to the EMBL/GenBank/DDBJ databases.
 Deloukas P.,et al.Nature 414:865-871(2001).

Images



Western blot detection of Aurora Kinase A in SW480 and COS7 cell lysates and using Aurora Kinase A mouse mAb (1:500 diluted). Predicted band size: 46KDa. Observed band size: 46KDa.



Immunocytochemistry staining of HeLa cells fixed with -20°C Methanol and using Aurora Kinase A mouse mAb (dilution 1:100).

Please note: All products are 'FOR RESEARCH USE ONLY. NOT FOR USE IN DIAGNOSTIC OR THERAPEUTIC PROCEDURES'.