

SAFB1 Antibody

Purified Mouse Monoclonal Antibody (Mab)

Catalog # AP52732

Product Information

Application	WB, ICC
Primary Accession	Q15424
Reactivity	Human
Host	Mouse
Clonality	Monoclonal
Isotype	IgG1
Calculated MW	102642

Additional Information

Gene ID	6294
Other Names	DKFZp779C1727;glutathione S transferase fusion protein;HAP;HET;HSP27 ERE TATA binding protein;HSP27 ERE-TATA-binding protein;HSP27 estrogen response element-TATA box-binding protein;SAF B;SAF-B1;SAFB1;SAFB;SAFB1;SAFB1_HUMAN;scaffold attachment factor B1.
Dilution	WB~~1:1000 ICC~~1:200
Format	Liquid in PBS containing 50% glycerol, 0.5% BSA and 0.02% sodium azide, pH 7.3.
Storage	Store at 4°C short term. Aliquot and store at -20°C long term. Avoid freeze/thaw cycles.

Protein Information

Name	SAFB
Synonyms	HAP, HET, SAFB1
Function	<p>Binds to scaffold/matrix attachment region (S/MAR) DNA and forms a molecular assembly point to allow the formation of a 'transcriptosomal' complex (consisting of SR proteins and RNA polymerase II) coupling transcription and RNA processing (PubMed:9671816). Functions as an estrogen receptor corepressor and can also bind to the HSP27 promoter and decrease its transcription (PubMed:12660241). Thereby acts as a negative regulator of cell proliferation (PubMed:12660241). When associated with RBMX, binds to and stimulates transcription from the SREBF1 promoter (By similarity).</p> <p>Nucleus</p>

Cellular Location**Tissue Location**

Ubiquitous. Expressed at high levels in the CNS and at low levels in the liver.
Expressed in a wide number of breast cancer cell lines

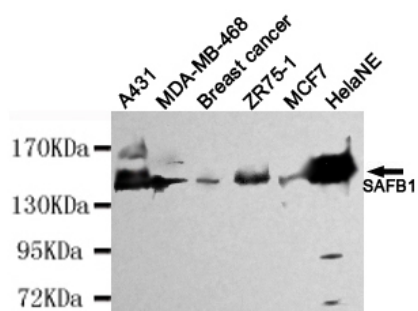
Background

Binds to scaffold/matrix attachment region (S/MAR) DNA and forms a molecular assembly point to allow the formation of a 'transcriptosomal' complex (consisting of SR proteins and RNA polymerase II) coupling transcription and RNA processing (By similarity). Can function as an estrogen receptor corepressor and can also bind to the HSP27 promoter and decrease its transcription. When associated with RBMX, binds to and stimulates transcription from the SREBF1 promoter (By similarity). Can inhibit cell proliferation.

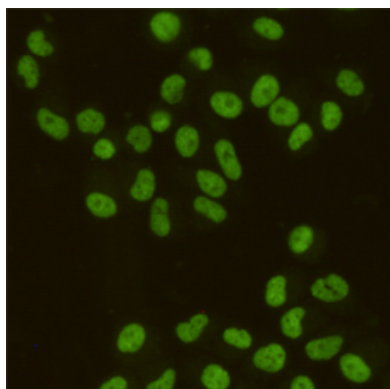
References

Oesterreich S.,et al.J. Cell. Biochem. 67:275-286(1997).
Ota T.,et al.Nat. Genet. 36:40-45(2004).
Grimwood J.,et al.Nature 428:529-535(2004).
Totoki Y.,et al.Submitted (MAR-2005) to the EMBL/GenBank/DDBJ databases.
Bienvenut W.V.,et al.Submitted (JUL-2009) to UniProtKB.

Images



Western blot detection of SAFB1 in HeLaNE, A431, MDA-MB-468, Breast cancer, ZR75-1 and MCF7 cell lysates using SAFB1 mouse mAb (1:4000 diluted). Predicted band size: 130kDa. Observed band size: 130kDa.



Immunocytochemistry staining of HeLa cells fixed with 4% Paraformaldehyde and using SAFB1 mouse mAb (dilution 1:200).

Please note: All products are 'FOR RESEARCH USE ONLY. NOT FOR USE IN DIAGNOSTIC OR THERAPEUTIC PROCEDURES'.