

CHRD1 Antibody

Purified Mouse Monoclonal Antibody (Mab)

Catalog # AP52735

Product Information

Application	WB, ICC
Primary Accession	Q9BU40
Reactivity	Human
Host	Mouse
Clonality	Monoclonal
Isotype	IgG1
Calculated MW	52026

Additional Information

Gene ID	91851
Other Names	CHL;chordin like 1;Chordin-like protein 1;CHRD1;CRDL1_HUMAN;dA141H5.1;neuralin 1;Neuralin-1;Neurogenesin-1;NRLN1;Ventroptin;VOPT.
Dilution	WB~~1:1000 ICC~~1:300
Format	Purified mouse monoclonal in buffer containing 0.1M Tris-Glycine (pH 7.4, 150 mM NaCl) with 0.09% (W/V) sodium azide, 50%,glycerol
Storage	Store at -20 °C.Stable for 12 months from date of receipt

Protein Information

Name	CHRD1
Synonyms	NRLN1
Function	Antagonizes the function of BMP4 by binding to it and preventing its interaction with receptors. Alters the fate commitment of neural stem cells from gliogenesis to neurogenesis. Contributes to neuronal differentiation of neural stem cells in the brain by preventing the adoption of a glial fate. May play a crucial role in dorsoventral axis formation. May play a role in embryonic bone formation (By similarity). May also play an important role in regulating retinal angiogenesis through modulation of BMP4 actions in endothelial cells. Plays a role during anterior segment eye development.
Cellular Location	Secreted.
Tissue Location	Expressed in the developing cornea and in the eye anterior segment in addition to the retina. Differentially expressed in the fetal brain. There is high

expression in cerebellum and neocortex Expressed in retinal pericytes.

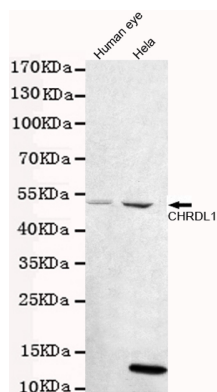
Background

Antagonizes the function of BMP4 by binding to it and preventing its interaction with receptors. Alters the fate commitment of neural stem cells from gliogenesis to neurogenesis. Contributes to neuronal differentiation of neural stem cells in the brain by preventing the adoption of a glial fate. May play a crucial role in dorsoventral axis formation. May play a role in embryonic bone formation (By similarity). May also play an important role in regulating retinal angiogenesis through modulation of BMP4 actions in endothelial cells. Plays a role during anterior segment eye development.

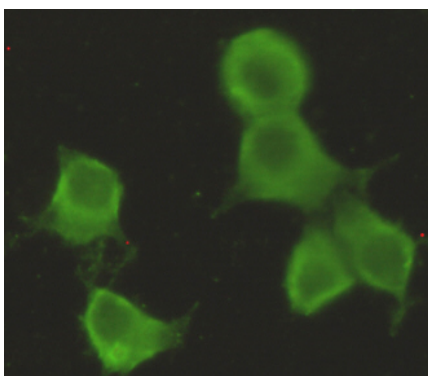
References

Kane R.,et al.Mol. Vis. 14:1138-1148(2008).
Ota T.,et al.Nat. Genet. 36:40-45(2004).
Ross M.T.,et al.Nature 434:325-337(2005).
Mural R.J.,et al.Submitted (SEP-2005) to the EMBL/GenBank/DDBJ databases.
Webb T.R.,et al.Am. J. Hum. Genet. 90:247-259(2012).

Images



Western blot detection of CHRDL1 in human eye and Hela cell lysates using CHRDL1 mouse mAb (1:1000 diluted). Predicted band size: 57kDa. Observed band size: 52kDa.



Immunocytochemistry stain of Hela using CHRDL1 mouse mAb (1:300).

Please note: All products are 'FOR RESEARCH USE ONLY. NOT FOR USE IN DIAGNOSTIC OR THERAPEUTIC PROCEDURES'.