

CDX2 Antibody

Purified Mouse Monoclonal Antibody (Mab)

Catalog # AP52774

Product Information

Application	WB, ICC, IP
Primary Accession	Q99626
Reactivity	Human, Mouse
Host	Mouse
Clonality	Monoclonal
Isotype	IgG2b
Calculated MW	33520

Additional Information

Gene ID	1045
Other Names	Caudal type homeo box 2;Caudal type homeo box transcription factor 2;Caudal type homeobox 2;Caudal type homeobox protein 2;caudal type homeobox transcription factor 2; Caudal-type homeobox protein 2;CDX 2;CDX 3;CDX-3;Cdx2;CDX2_HUMAN;CDX3;Homeobox protein CDX 2;Homeobox protein CDX-2;Homeobox protein CDX2.
Dilution	WB~~1:1000 ICC~~1:100 IP~~1:500
Format	Purified mouse monoclonal in PBS(pH 7.4)containing with 0.09% (W/V) sodium azide,50% glycerol.
Storage	Store at -20 °C.Stable for 12 months from date of receipt

Protein Information

Name	CDX2
Synonyms	CDX3
Function	Transcription factor which regulates the transcription of multiple genes expressed in the intestinal epithelium (By similarity). Binds to the promoter of the intestinal sucrase-isomaltase SI and activates SI transcription (By similarity). Binds to the DNA sequence 5'-ATAAAAACTTAT-3' in the promoter region of VDR and activates VDR transcription (By similarity). Binds to and activates transcription of LPH (By similarity). Activates transcription of CLDN2 and intestinal mucin MUC2 (By similarity). Binds to the 5'-AATTTTTTACAACACCT-3' DNA sequence in the promoter region of CA1 and activates CA1 transcription (By similarity). Important in broad range of functions from early differentiation to maintenance of the intestinal epithelial lining of both the small and large intestine. Binds preferentially to methylated

DNA (PubMed:[28473536](#)).

Cellular Location

Nucleus {ECO:0000250|UniProtKB:P43241}.

Tissue Location

Detected in small intestine, colon and pancreas.

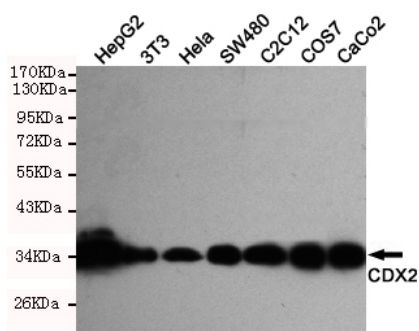
Background

Involved in the transcriptional regulation of multiple genes expressed in the intestinal epithelium. Important in broad range of functions from early differentiation to maintenance of the intestinal epithelial lining of both the small and large intestine.

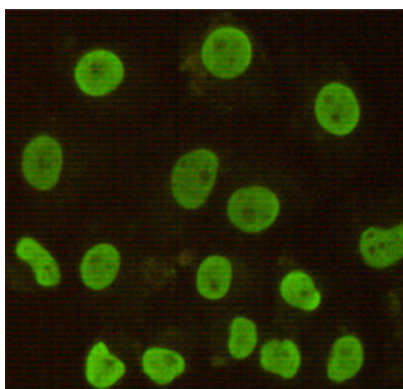
References

Drummond F.J.,et al.*Ann. Hum. Genet.* 61:393-400(1997).
Mallo G.V.,et al.*Int. J. Cancer* 74:35-44(1997).
Sivagnanasundaram S.,et al.*Br. J. Cancer* 84:218-225(2001).
Tanizawa Y.,et al.Submitted (JUN-1997) to the EMBL/GenBank/DDBJ databases.
Dunham A.,et al.*Nature* 428:522-528(2004).

Images

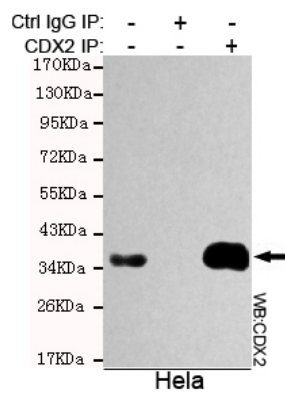


Western blot detection of CDX2 in HeLa,Caco2,C2C12,SW480,COS7,HepG2 and 3T3 cell lysates using CDX2 mouse mAb (1:1000 diluted).Predicted band size:34KDa.Observed band size:34KDa.



Immunocytochemistry stain of HeLa using CDX2 mouse mAb (1:100).

Immunoprecipitation analysis of HeLa cell lysate using CDX2 mouse mAb.



Please note: All products are 'FOR RESEARCH USE ONLY. NOT FOR USE IN DIAGNOSTIC OR THERAPEUTIC PROCEDURES'.