

STAT3 Antibody

Purified Mouse Monoclonal Antibody (Mab)

Catalog # AP52814

Product Information

Application	WB
Primary Accession	P40763
Reactivity	Human, Mouse
Host	Mouse
Clonality	Monoclonal
Isotype	IgG1
Calculated MW	88068

Additional Information

Gene ID	6774
Other Names	1110034C02Rik;Acute Phase Response Factor;Acute-phase response factor;APRF;AW109958;DNA binding protein APRF;FLJ20882;HIES;MGC128731;MGC16063;MGC93551;Signal transducer and activator of transcription 3 (acute-phase response factor);Signal transducer and activator of transcription 3;STAT 3;Stat3;STAT3_HUMAN;Transcription factor.
Dilution	WB~~1:1000
Format	Liquid in PBS containing 50% glycerol, 0.5% BSA and 0.02% sodium azide, pH 7.3.
Storage	Store at 4°C short term. Aliquot and store at -20°C long term. Avoid freeze/thaw cycles.

Protein Information

Name	STAT3 {ECO:0000303 PubMed:9630560, ECO:0000312 HGNC:HGNC:11364}
Function	Signal transducer and transcription activator that mediates cellular responses to interleukins, KITLG/SCF, LEP and other growth factors (PubMed: 10688651 , PubMed: 12359225 , PubMed: 12873986 , PubMed: 15194700 , PubMed: 15653507 , PubMed: 16285960 , PubMed: 17344214 , PubMed: 18242580 , PubMed: 18782771 , PubMed: 22306293 , PubMed: 23084476 , PubMed: 28262505 , PubMed: 32929201 , PubMed: 38404237). Once activated, recruits coactivators, such as NCOA1 or MED1, to the promoter region of the target gene (PubMed: 15653507 , PubMed: 16285960 , PubMed: 17344214 , PubMed: 18782771 , PubMed: 28262505 , PubMed: 32929201). May mediate cellular responses to activated FGFR1, FGFR2, FGFR3 and FGFR4 (PubMed: 12873986). Upon activation of IL6ST/gp130 signaling by

interleukin-6 (IL6), binds to the IL6-responsive elements identified in the promoters of various acute-phase protein genes (PubMed:[12359225](#)). Activated by IL31 through IL31RA (PubMed:[15194700](#)). Acts as a regulator of inflammatory response by regulating differentiation of naive CD4(+) T-cells into T-helper Th17 or regulatory T-cells (Treg): acetylation promotes its transcription activity and cell differentiation while deacetylation and oxidation of lysine residues by LOXL3 inhibits differentiation (PubMed:[28065600](#), PubMed:[28262505](#)). Involved in cell cycle regulation by inducing the expression of key genes for the progression from G1 to S phase, such as CCND1 (PubMed:[17344214](#)). Mediates the effects of LEP on melanocortin production, body energy homeostasis and lactation (By similarity). May play an apoptotic role by transactivating BIRC5 expression under LEP activation (PubMed:[18242580](#)). Cytoplasmic STAT3 represses macroautophagy by inhibiting EIF2AK2/PKR activity (PubMed:[23084476](#)). Plays a crucial role in basal beta cell functions, such as regulation of insulin secretion (By similarity). Following JAK/STAT signaling activation and as part of a complex with NFATC3 and NFATC4, binds to the alpha-beta E4 promoter region of CRYAB and activates transcription in cardiomyocytes (By similarity).

Cellular Location

Cytoplasm. Nucleus Note=Shuttles between the nucleus and the cytoplasm (PubMed:[29162862](#)) Translocated into the nucleus upon tyrosine phosphorylation and dimerization, in response to signaling by activated FGFR1, FGFR2, FGFR3 or FGFR4 (PubMed:[15653507](#), PubMed:[16285960](#)). Constitutive nuclear presence is independent of tyrosine phosphorylation. Predominantly present in the cytoplasm without stimuli. Upon leukemia inhibitory factor (LIF) stimulation, accumulates in the nucleus. The complex composed of BART and ARL2 plays an important role in the nuclear translocation and retention of STAT3. Identified in a complex with LYN and PAG1. Translocates to the nucleus in the presence of EDN1 (By similarity). {ECO:0000250|UniProtKB:P52631, ECO:0000269|PubMed:[15653507](#), ECO:0000269|PubMed:[16285960](#), ECO:0000269|PubMed:[29162862](#)}

Tissue Location

Heart, brain, placenta, lung, liver, skeletal muscle, kidney and pancreas. Expressed in naive CD4(+) T cells as well as T-helper Th17, Th1 and Th2 cells (PubMed:[31899195](#))

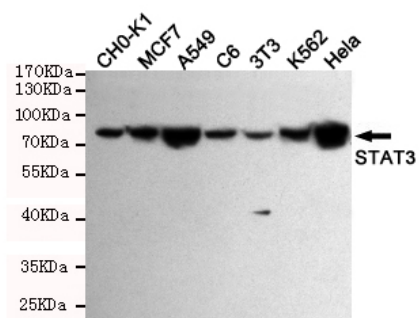
Background

Signal transducer and transcription activator that mediates cellular responses to interleukins, KITLG/SCF and other growth factors. May mediate cellular responses to activated FGFR1, FGFR2, FGFR3 and FGFR4. Binds to the interleukin-6 (IL-6)- responsive elements identified in the promoters of various acute- phase protein genes. Activated by IL31 through IL31RA. Cytoplasmic STAT3 represses macroautophagy by inhibiting EIF2AK2/PKR activity. Plays an important role in host defense in methicillin-resistant S.aureus lung infection by regulating the expression of the antimicrobial lectin REG3G (By similarity).

References

Akira S.,et al.Cell 77:63-71(1994).
Della Pietra L.,et al.Gene 213:119-124(1998).
Feinstein E.,et al.Patent number EP2440214, 18-APR-2012.
Ota T.,et al.Nat. Genet. 36:40-45(2004).
Zody M.C.,et al.Nature 440:1045-1049(2006).

Images



Western blot detection of STAT3 in CHO-K1,C6,3T3,K562,C
EM,Jurkat,Hela,MCF7,COS7,293T,A431 and A549 cell
lysates using STAT3 mouse mAb (1:1000
diluted).Predicted band size:88KDa.Observed band
size:88KDa.

Please note: All products are 'FOR RESEARCH USE ONLY. NOT FOR USE IN DIAGNOSTIC OR THERAPEUTIC PROCEDURES'.